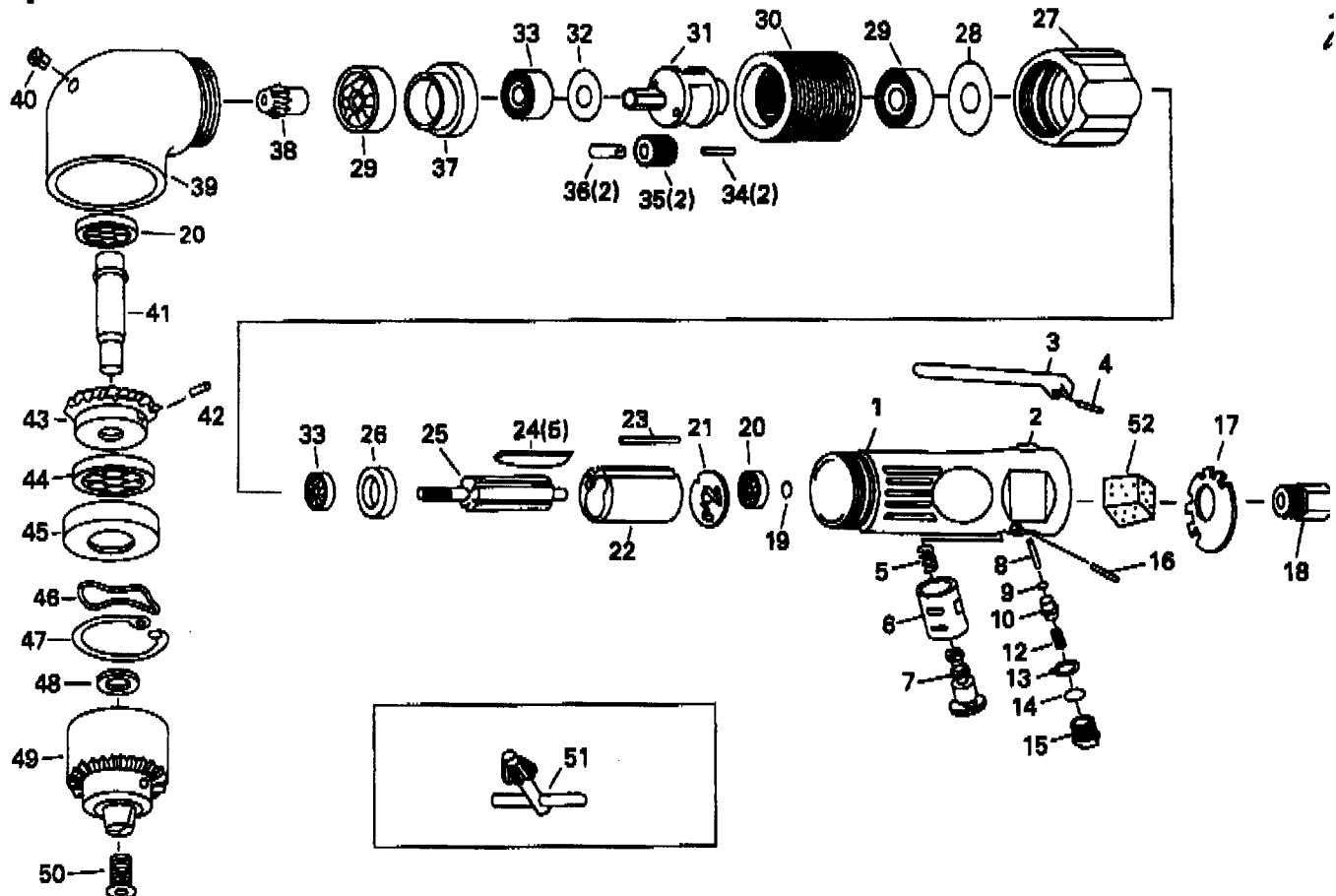


MAINTENANCE INSTRUCTIONS REVERSIBLE ANGLE DRILL MODEL MD-3312B 3/8"

TOKU

TOKU PNEUMATIC PRODUCTS

Exploded View



Sym. No.	Parts No.	Q'ty. No.	Description
1	T3-07-04-010	1	Housing
2	T3-07-04-020	1	Valve Bushing
3	T3-07-04-030	1	Throttle Lever
4	T5-02-13-280	1	Spring Pin (3x24)
5	T3-07-04-050	1	Reverse Spring
6	T3-07-04-060	1	Reverse Valve Bush
7	T3-07-04-070	1	Reverse Valve
8	T3-07-04-080	1	Roller Pin 3.5x34.8
9	T5-02-13-260	1	O-Ring(P-4)
10	T3-07-04-100	1	Valve Stem
12	T3-07-04-120	1	Valve Spring
13	T3-07-04-130	1	Reverse Guide
14	T5-07-12-050	1	O-Ring(P-7)
15	T3-07-04-150	1	Valve Screw
16	T3-07-04-160	1	Spring Pin 2.5x20
17	T3-07-04-170	1	Deflector
18	T3-07-04-180	1	Air Inlet Bushing
19	T5-02-13-170	1	Snap Ring (S-6)
20	T5-04-04-100	1	Bearing (626ZZ)
21	T5-02-13-150	1	End Plate
22	T5-02-13-120	1	Cylinder
23	T5-02-13-100	1	Pin
24	T5-02-10-290	5	Rotor Blade
25	T5-02-12-250	1	Rotor
26	T5-02-12-260	1	Front End Plate
27	T5-04-04-180	1	Clamp Nut

Sym. No.	Parts No.	Q'ty. No.	Description
28	T5-04-04-190	1	Washer
29	T5-02-12-290	2	Bearing (6001)
30	T5-02-12-300	1	Internal Gear
31	T5-02-12-310	1	Spindle Cage
32	T5-02-12-320	1	Washer S
33	T5-04-02-180	2	Bearing (608ZZ)
34	T5-02-12-340	2	Roller Pin 4x13.8
35	T5-02-12-350	2	Planet Gear
36	T5-02-12-360	2	Bushing
37	T5-02-12-370	1	Spacer
38	T5-02-12-380	1	Pinion
39	T5-02-12-390	1	Angle Housing
40	T5-02-12-400	1	Grease Nipple
41	T5-02-12-410	1	Spindle
42	T5-02-12-420	1	Set Screw 4x6
43	T5-02-12-430	1	Gear
44	T5-07-10-220	1	Bearing (6000ZZ)
45	T5-02-12-450	1	Bearing Case
46	T5-06-75-370	1	Wave Washer (WW-23)
47	T5-02-12-470	1	Retaining Ring (R-32)
48	T5-02-13-030	1	Spacer Ring
49	T5-02-10-010	1	3/8" Drill Chuck
50	T5-02-11-510	1	Chuck Screw
51	T5-02-10-530	1	3/8" Drill Chuck Key
52	T5-02-10-500	1	Silencer Material