

# TECHNICAL DATA SHEET

LAURENZO Rubber Mid ESD S3S No. 766941


Sz. 36 - 50



## LABELLING ACCORDING TO STANDARD

<p>Standard for safety footwear EN ISO 20345:2022 S3S</p>	<p>Basic requirement for S3S:  <b>A</b> Antistatic shoe - <b>E</b> Energy absorption in the heel -  <b>WPA</b> Water penetration and absorption -  <b>S</b> Textile penetration protection - Closed heel area - Basic Slip resistance test on ceramic tile + NaLS (soap solution) - Profiled outsole</p>
<p>Additional requirements</p>	<p><b>FO FUEL RESISTANCE</b></p> <p><b>SR SLIP RESISTANCE</b> on ceramic tile with glycerine.</p> <p><b>SC SCUFF CAP</b> The overcap manages a certain amount of abrasion.</p> <p><b>LG LADDER GRIP</b> Heel edge of at least 10 mm</p> <p><b>HI HEAT INSULATED</b></p> <p><b>HRO HEAT RESISTANT OUTSOLE</b> Heat resistance against contact heat, also during short-term high temperatures</p>




## FORM

<p>Safety laced boot</p> 	<p>Form B - in size 42, the upper height must be at least 11.3 cm.</p>
--	--

## AREAS OF APPLICATION

<p>Areas of application</p>	<p>Indoors and outdoors  Areas where exposure to moisture is expected (S2)  Areas where there is a risk of penetration from pointed and sharp objects (S3/S3L/S3S)  Areas where there is a risk of electrostatic discharge (ESDS/ESD)</p>
-----------------------------	---

## FEATURES

ESD equipment	Thanks to its excellent discharge capability, the shoe is suitable for work in ESD sensitive or electrostatically protected areas (EPA). The shoes comply to the standard 61340-5-1.	
Sizes (unisex model)	<ul style="list-style-type: none"> <li>Expanded size range: available in sizes 36 - 50</li> </ul>	
Certification in accordance with DGUV rule 112-191	<ul style="list-style-type: none"> <li>Certified for orthopaedic inserts</li> </ul>	
Three widths	The comfortable three-widths-system offers more volume to forefoot, instep and toes - thus giving every foot the space it needs.	
Full, padded bellows tongue	<ul style="list-style-type: none"> <li>Excellent wearing comfort: The tongue prevents pressure marks and avoids dirt from entering into the shoe.</li> </ul>	
Collar padding	<ul style="list-style-type: none"> <li>Excellent wearing comfort: the ankle-wrapping, softly padded upper edge provides for stability and grip in the shoe.</li> </ul>	
Reflective material	<ul style="list-style-type: none"> <li>Good visibility in the dark</li> </ul>	
PU toe protection (polyurethane)	<ul style="list-style-type: none"> <li>Directly applied tip protection</li> <li>Excellent wear protection in the shoe tip area</li> <li>Protects the upper material in this area against premature wear</li> </ul>	


## UPPER MATERIAL

Cowhide leather	<ul style="list-style-type: none"> <li>Areas of application S1/S2/S3</li> <li>Natural material</li> <li>Wear-resistant</li> <li>Breathable</li> <li>Water penetration/absorption in accordance with EN ISO 20345 S2</li> </ul>	
-----------------	--	--

## LINING

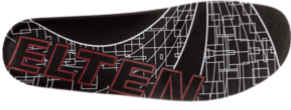
Breathable fabric lining	<ul style="list-style-type: none"> <li>Climate-regulating</li> <li>Good ventilation</li> <li>Skin-friendly</li> <li>High absorption and emission of moisture</li> </ul>	
Heel pocket lining	<ul style="list-style-type: none"> <li>The abrasion-resistant microfibre material is particularly sturdy and provides for a pleasant wearing comfort.</li> </ul>	

## TOE PROTECTION CAP

<p>Steel toe cap</p> 	<ul style="list-style-type: none"> <li>Protection against impacts of min. 200 joules and pressure loading of min. 15 kN</li> <li>Permanent edge coverage for cushioning</li> <li>Ergonomically shaped</li> <li>Comfortable toe room</li> <li>Good coverage of the little toe area</li> </ul>	
--	--	--

## INLAY SOLE

Full-length inlay sole  
ESD PRO (rec)



- ESD EQUIPMENT: Protection against electrostatic discharge (ESD). The full-length, exchangeable inlay sole is conductive and designed for the use in ESD safety footwear according to the standards DIN EN ISO 20345 and DIN EN 61340-5-1.
- Inlay sole with recycled material content
- The full-length, exchangeable inlay sole provides the highest possible comfort in safety shoes.
- The inlay sole is functionally absorbing and releasing moisture and thus provides for a pleasant foot climate.
- The extreme softness of the PU foam absorbs shocks on impact and increases walking comfort.
- Improvement of the shoe climate thanks to the PU foam's open cell structure. So the foot is always kept comfortably dry.

## PENETRATION RESISTANCE

Metal-free penetration  
protection

The textile midsole complies with the penetration safety standard EN 12568 and furthermore fulfils the additional requirements for penetration protection in accordance with EN ISO 20344 / 20345. The light and flexible material enables an increased elasticity of the shoe, which can particularly be recognized when working on uneven grounds or on your knees.

The textile variant offers 100 % foot coverage compared to steel midsoles (foot coverage 85 % due to limits in the shoe manufacturing process). Being 100 % metal-free and antimagnetic, this equipment is used as penetration protection in safety shoes.

## OUTSOLE

SAFETY-GRIP deep-  
treaded double-density  
sole with profile



- S-line shaped configuration of the tread blocks, for an ergonomic foot roll
- Excellent slip resistance
- Antistatic

Outsole: Rubber

- Colour: black
- Profile depth: 6.0 mm
- Particularly abrasion-resistant
- Heat-resistant to approx. 200°C, for short periods to 300°C
- Flexible at cold temperatures to approx. -20°C
- Oil and fuel resistant
- Resistant to a large number of chemicals (acids and alkalis)
- Notch-resistant

Midsole: PU (polyurethane)

- The soft PU core provides a good impact absorption and high wearing comfort