



TECHNICAL DATA SHEET

BEKINA® BOOTS Steplite® (Agrilite®)

BEKINA® BOOTS

Size range			
• EU	36 - 48		
• UK	3.5 - 13		
• US	4 - 15		
Weight / pair (42)			
• Steel toe cap & midsole	±/ - 1.630 g		
Leg			
A. Dimensions			
• Height	outer measure: 38 cm		
	cutting edge: 31 cm		
• Foot length	outer measure: 30 cm		
	inner measure: 28 cm		
B. Thickness			
• Upper edge	2,85 - 3,20 mm		
• Calf	2,90 - 3,10 mm		
• Shinbone	2,80 - 2,90 mm		
• Ankle	3,50 - 3,90 mm		
• Heel	3,90 - 5,40 mm		
• Toe	3.70 - 5,00 mm		
C. Raw material			
	NEOTANE®		
D. Specific weight			
	0,65 - 0,70 g/ml		
E. Colour			
	black / green / yellow		
F. Tensile strength			
(incl. lining)	893 N/cm ² 8.39 MPa		
G. Elongation			
(incl. lining)	1145% ±/ - 20%		
H. Hardness			
	42° - 47° Shore A		
I. Tear strength			
	11,1 N/mm		
J. Aging			
	7 days at 70°	14 days at 70°	21 days at 70°
• tensile strength	721 N/cm ² 7.21 MPa	963 N/cm ² 9.63 MPa	804 N/cm ² 8.04 MPa
• elongation	1251% ±/ - 20%	1489,2% ±/ - 20%	1349% ±/ - 20%
• tear strength	10,5 N/mm	10,3 N/mm	10.7 N/mm



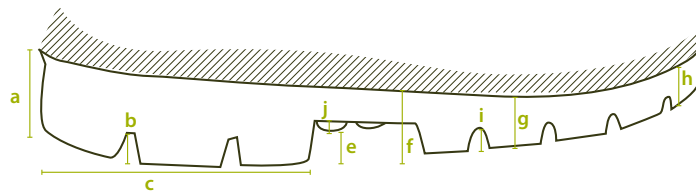
TECHNICAL DATA SHEET

BEKINA® BOOTS Steplite® (Agrilite®)

K. Chemical resistance	
	see detailed list
L. Environmental temperature	
• Maximum	+/- 100°C
• Minimum	-20°C

Lining

A. Material	
	PU coating on tricot
B. Seams	
	in front & middle of sole
	stitched / yellow: stitched and welded seams



Sole profile

A. Dimensions	
• Heel	
• Thickness	(a) 32 mm 1.26 inches
• Profile depth	(b) 8,6 mm 0.34 inches
• Length	(c) 90,3 mm 3.55 inches
• Width	81,2 mm 3.19 inches
• Middle foot	
• Height	(e) 12 mm 0.47 inches
• Ladder anti-slip grips	(j) 2 mm 0.08 inches
• Sole	
• Thickness	(f) 23,3 mm 0.92 inches
	(g) 20,0 mm 0.79 inches
	(h) 17,9 mm 0.70 inches
• Profile depth	(i) 6.75 mm 0.26 inches
B. Raw material	
	NEOTANE®
C. Specific weight	
	0,65 - 0,70 g/ml
D. Colour	
	black
E. Mechanical characteristics	
	see leg (f) - (j)



TECHNICAL DATA SHEET

BEKINA® BOOTS Steplite® (Agrilite®)

F. Energy - absorption of the heel	30 - 35 (min 20)
G. Antistatic	dry: $2,2 \times 10^9$ Ohm wet: $4,0 \times 10^7$ Ohm
H. Abrasion mm³	35
I. Hardness	62,5° +/- 2,5° Shore A
J. Slip resistance of sole	SRC
K. Chemical resistance	See enclosed list

Safety

Toe cap & sole	Standard	Required	Type	Result
● Penetration resistance of sole	ISO 20345:2011	> 1100 N	metallic	1430 N
● Impact resistance on toe cap (load 200 N)	EN 12568	> 14 mm	metallic	17 mm
● Compression resistance of toe cap	ISO 20345:2011	> 14 mm	metallic	25 mm
● Width of steel toe cap	87,3 mm			
● Height of steel toe cap	44,2 mm			

Accessories

Insole	
● Bottom	black gel latex
• Thickness	1 mm 0.039 inches
• Shape	embossed
● Interlayer	non-woven textile
● Upper	green woven textile
● Washable	30°C