



DRAWING CHANGE

1  
13

2  
14

3  
15

4  
16

5  
17

6  
18

7  
19

8  
20

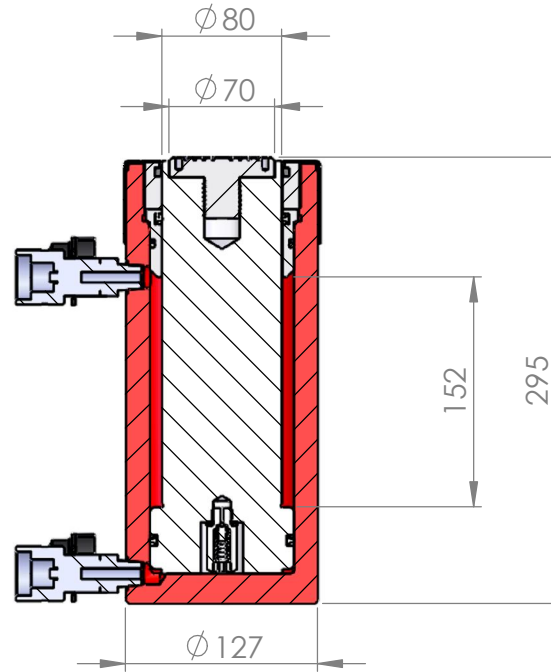
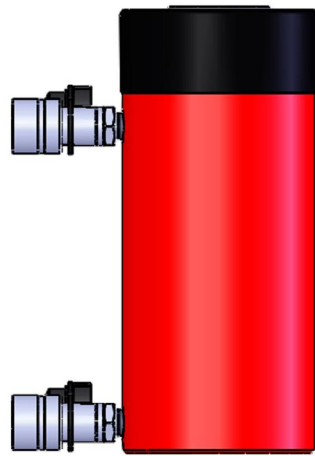
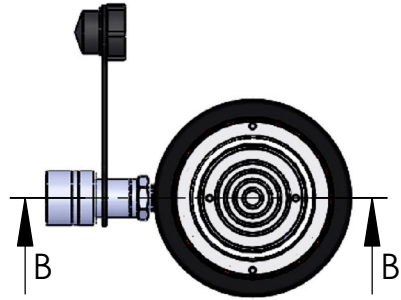
9  
21

10  
22

11  
23

12  
24

INC REV. DRAWINGS AT REVISION #.# ARE VALID FOR USE WITH DOCUMENTATION FOR REVISION #



SECTION B-B



TITLE:  
**DOUBLE ACTING CYLINDER**

DRAWN MM  
DATE 12/03/2015  
CHKD

MATERIAL:  
FINISH:

REMARKS

UNLESS SPECIFIED OTHERWISE, M/C FINISH  
Ra 1.6  $\mu$ m

**DO NOT SCALE**

ALL DIMS ARE IN mm AND INCLUDE ANY SURFACE TREATMENTS.  
TOLERANCES (UNLESS SPECIFIED OTHERWISE):  
LINEAR DIMS  $\pm 0.25$   
ANGULAR DIMS  $\pm 0.5^\circ$   
COAXIAL DIAMS TO BE CONCENTRIC TO WITHIN 0.05 T.I.R. REMOVE ALL BURRS AND SHARP EDGES

COMPONENT DRG NO.

**HDA506**

**SHT 1 OF 1 SHTS**

THIS DRAWING IS THE SOLE PROPERTY OF HI-FORCE LTD. AND MUST NOT BE LOANED, COPIED OR USED IN ANY WAY WITHOUT THE WRITTEN CONSENT OF THE Co.

PROSPECT WAY, DAVENTRY  
NORTHANTS. NN11 8PL

**Hi-Force**  
HYDRAULIC TOOLS