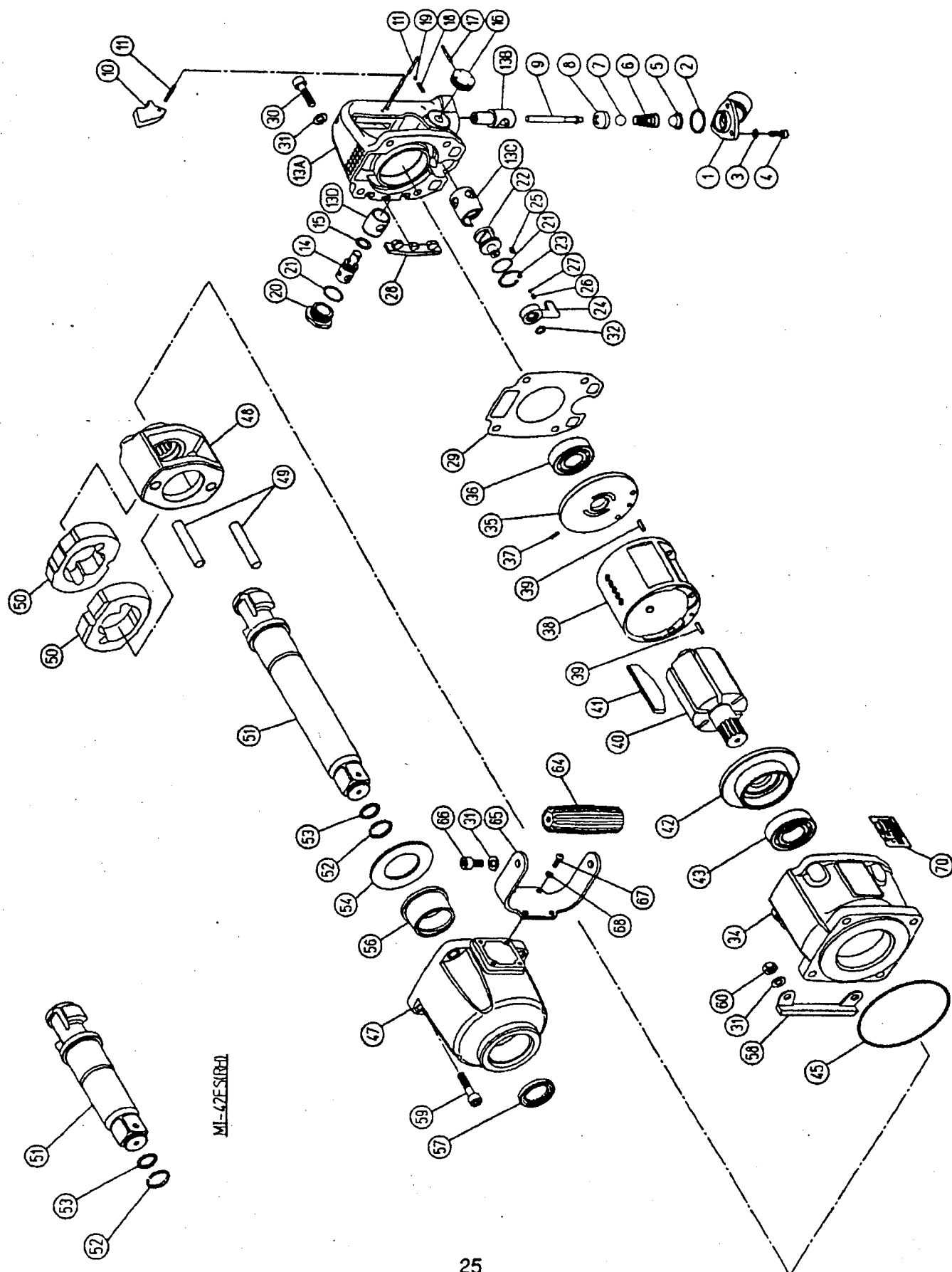


# **Exploded view Impact wrench MI-42ES(RH)/MI-42EL(RH)**



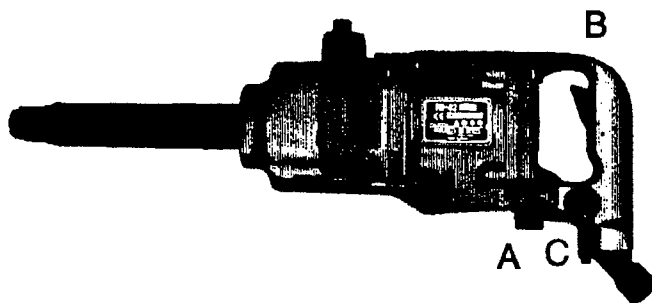
## Partslist Impact wrench MI-42ES(RH)/MI-42EL(RH)

Symbol No.	Parts No.	Q'ty. Req'd	Description
1	43-16-81-G40	1	Air Inlet
2	13-11-03-018	1	O Ring S-22.4
3	13-13-10-005	3	Spring Washer M5
4	13-17-05-016	3	Hex. Socket Head Cap Screw M5X16
5	13-68-03-032	1	Net Screen
6	13-08-08-002	1	Throttle Valve Spring
7	13-05-05-028	1	Polyurethane Rubber Ball
8	13-55-05-009	1	Throttle Valve
9	13-04-05-011	1	Throttle Push Rod
10	43-12-67-130	1	Trigger
11	13-06-03-024	2	Spring Pin 3X24
13A	43-18-64-020	1	Handle
13B	43-12-66-090	1	Throttle Valve Bushing
13C	43-12-66-200	1	Reverse Valve Bushing
13D	43-12-66-140	1	Control Valve Bushing
14	43-18-60-150	1	Control Valve
15	13-11-01-012	1	O Ring P-12
16	43-12-66-260	1	Control Valve Knob
17	13-06-03-024	1	Spring Pin 3X24
18	13-08-08-001	1	Spring
19	13-05-02-010	1	Steel Ball
20	43-12-66-270	1	Control Valve Cap
21	13-11-03-016	2	O Ring S-20
22	43-12-66-210	1	Reverse Valve
23	13-03-01-024	1	Retaining Ring H-24
24	43-16-81-230	1	Reverse Valve Lever
25	13-04-10-381	1	Key
26	13-08-09-005	1	Spring
27	13-05-02-008	1	Steel Ball
28	13-66-06-001	1	Protector (R)
29	13-61-04-001	1	Motor Housing Packing
30	13-17-08-030	4	Hex. Socket Head Cap Screw M8X30
31	13-13-09-008	10	Washer M8
32	13-11-03-006	1	O Ring S-8
34	43-18-60-010	1	Motor Housing
35	43-12-66-370	1	Rear End Plate
36	13-01-07-005	1	Bearing 6204
37	13-06-03-010	1	Spring Pin 3X10
38	43-18-60-360	1	Liner
39	13-06-04-014	2	Spring Pin 4X14
40	43-18-60-390	1	Rotor
41	13-71-10-035	6	Vane
42	43-12-66-380	1	Front End Plate
43	13-01-07-006	1	Bearing 6205
45	13-11-03-054	1	O Ring S-100
47	43-18-60-520	1	Clutch Housing
48	43-18-60-440	1	Hammer Frame
49	43-18-60-460	2	Hammer Pin
50	43-18-60-450	2	Hammer
51	43-18-60-500	1	Anvil Shank L(RH)
	43-18-61-500	1	Anvil Shank S(RH)
52	13-08-03-144	1	Socket Retainer Ring
53	13-11-05-013	1	O Ring 6227-13

Symbol No.	Parts No.	Q'ty. Req'd	Description
54	43-18-60-420	1	Spacer
56	43-12-66-530	1	Housing Bushing
57	13-12-02-048	1	Oil Seal VB-40525
58	13-62-01-015	1	Protector(F)
59	13-17-08-035	4	Hex. Socket Head Cap Screw M8×35
60	13-45-01-008	4	U Nut M8
64	43-12-66-620	1	Grip
65	43-16-81-550	1	Dead Handle
66	13-17-08-016	2	Hex. Socket Head Cap Screw M8×16
67	13-19-05-014	4	Hex. Socket Button Head Screw M5×14
68	13-13-10-005	4	Spring Washer M5
70	13-73-05-085	1	Name Plate
13	43-18-64-02B	(1CP)	Handle CP (Incl Index No.13A,13B,13C,13D&13E)
	43-18-64-02D	(1ASY)	Handle Assy (Incl Index No.1,2,3,4,5,6,7,8,9,10,11,13,14,15, 16,17,18,19,20,21,22,23,24,25,26,27&32)
	43-18-60-52C	(1CP)	Clutch Housing CP (Incl Index No.47,56&57)
	43-18-60-50C	(1CP)	Anvil Shank L (RH) CP (Incl Index No.51,52&53)
	43-18-61-50C	(1CP)	Anvil Shank S (RH) CP (Incl Index No.51,52&53)
	<del>43-17-66-55C</del> 43-16-81-55C	(1CP)	Dead Handle CP (Incl Index No.64,65,66,67&68)

A.

links/rechts schakelaar  
left/right switch  
links/rechts Umschalter  
gauche/droite interrupteur  
cambio izquierda/derecha  
høire/venstre kontakt  
invertitore di rotazione  
reglage vänster/högervarv  
hendel for dreieretning



B.

bedieningsknop  
throttle  
Ventil  
poignée tournante  
valvula  
regulering  
comando d'avviamento  
pádrag

C.

regelknop  
adjustment screw  
Einstellschraube  
vis de réglage  
ornillo de ajuste  
justeringsskrue  
vite di regolazione  
reglerskruv moment