

**PARTS LIST**

**MODEL 231  
TWO STAGE  
HIGH PRESSURE  
AIR COMPRESSOR**

## GENERAL INFORMATION

This manual contains an illustrated breakdown of the unit into assemblies, subassemblies and detail parts required for maintenance and repair. Please retain this manual for reference.

## COLUMNS

Each parts list is divided into the following columns:

**Reference Number.** This column lists the figure number for the illustration, followed by the call-out number on the illustration which identifies that item. For example, figure number 3, item number 5 would be written as 3-5 in this column. The reference number is usually not required for ordering parts or kits.

The following abbreviations might appear in the Reference Number column:

- NI = Not Illustrated.
- Ref = Reference Only. You may be referred to a figure and page noted in the Description column.

Additional abbreviations or symbols used are defined below the parts list.

**Description.** The description column identifies items by standard name (nomenclature) and modifiers. The modifiers are used to identify specific characteristics (dimensions, capacity, pressure setting, etc.), and/or the particular location or function on the unit. The relationship of a subassembly or component part to higher assemblies is shown by indentation and "bullet" (•) symbols. Assemblies which are broken down in separate lists and illustrations show the appropriate figure number and page reference after the item description. Always provide the part description when ordering.

| REF. NO. | PART NO. | DESCRIPTION                     | QTY. | SPARES |   |   |
|----------|----------|---------------------------------|------|--------|---|---|
| 3-1      | 95344651 | PLUG, PIPE - HEX HEAD 1/2"      | 1    | 1      | 2 | 3 |
| 3-2      | 95640009 | NIPPLE, LONG - 1/2" X 1/2"      | 1    |        |   |   |
| 3-3      | 32179091 | COUPLING, PIPE - 1/2"           | 1    |        |   |   |
| 3-4      | 30216055 | PLUG, OIL FILLER COMPLETE       | 1    |        |   |   |
| •        | 95018149 | • O - RING                      | 1    | 1      | 1 | 2 |
| 3-5      | 32000655 | DECAL, HAND TIGHTEN             | 1    |        |   |   |
| 3-7      | 95227302 | CAPSCREW - HEX 5/16-18 X 7/8"   | 5    |        |   |   |
| 3-8      | 95079684 | CAPSCREW - HEX 5/16-18 X 1-1/4" | 1    |        |   |   |
| 3-8      | 95674651 | GASKET - COPPER WASHER          | 1    |        |   |   |
| 3-10     | 37127107 | COVER, FRAME END                | 1    |        |   |   |
| 3-11     | 30296226 | GASKET, FRAME END COVER         | •    | 1      | 1 | 2 |
| 3-12     | 95077796 | NUT - HEX 1/2-13                | 1    |        |   |   |
| 3-13     | 95716880 | LOCKWASHER, SPRING - 1/2"       | 1    |        |   |   |
| 3-14     | 95053682 | CAPSCREW - HEX 1/2-13 X 3-1/2"  | 1    |        |   |   |
| 3-15     | 30212908 | WHEEL, V-BELT                   | 1    |        |   |   |
| 3-16     | 37030489 | VALVE, PILOT                    | 1    | 1      | 1 | 1 |
| 3-17     | 37030417 | PIN ASSEMBLY, THRUST            | 1    | 1      | 1 | 2 |
| 3-18     | 95066289 | LOCKWIRE, 12 GA X 5"            | 1    |        |   |   |
| 3-19     | 95441111 | CAPSCREW - HEX 1/4-20 X 3/4"    | 2    |        |   |   |

**Quantity.** Quantities listed in this column reflect the number of each item used in the next higher assembly, and are not necessarily the total quantity of the part used on the unit. Specify the desired quantity when ordering.

**Part Number.** Items listed in this column bear Ingersoll-Rand part numbers. Specify the part number when ordering spare or replacement parts.

The following abbreviations or symbols might appear in the Part Number column:

- NSS = Not Sold Separately. Such items must be ordered as part of the next higher assembly or, where applicable, as part of a Step Saver Kit.
- \*\* = Part number will vary.

Additional abbreviations or symbols used are defined below the applicable parts list.

**Spares.** Quantities under this heading reflect the number of each item which we recommend be kept on hand for maintenance or repair. The appropriate quantity for your application will depend on how critical interruptions in service are to your operation.

| Class | Quantity | Suggested for   |
|-------|----------|---|
| 1     | Minimum  | Domestic service where interruptions in service are acceptable.                         |
| 2     | Average  | Domestic service where some interruptions in service are acceptable.                    |
| 3     | Maximum  | Export service or for domestic service where interruptions in service are unacceptable. |

## STEP SAVER KITS

Step Saver Kits for this unit are listed in this manual. These kits provide all of the parts required to perform common repair or scheduled maintenance tasks, such as piston ring replacement or valve replacement. When ordering the kits, use the description and part number as shown.

| Kit                    | Contents  |
|------------------------|---|
| Valve/Gasket           | Valve wearing parts and head gaskets that are destroyed in replacing valve parts.   |
| Ring/Gasket            | Complete set of piston rings, a crankshaft seal, and gaskets that are destroyed in breaking the unit down to replace the rings. |
| Bearing/Connecting Rod | Set of connecting rods, main bearings, and a crankpin bushing.  |

## ORDERING INSTRUCTIONS

All parts listed in this manual can be ordered through your local Ingersoll-Rand Air Center or Distributor. Consult the Directory of Distributors included with the unit to find the Air Center or Distributor in your area.

When ordering, provide the following information:

- The model number and serial number stamped on the unit nameplate.
- The form number of this manual, as indicated in the lower right-hand corner of the front cover.
- The quantity, description, and part number of the part(s) you are ordering.

FIGURE 1. INLET FILTER ASSEMBLY.

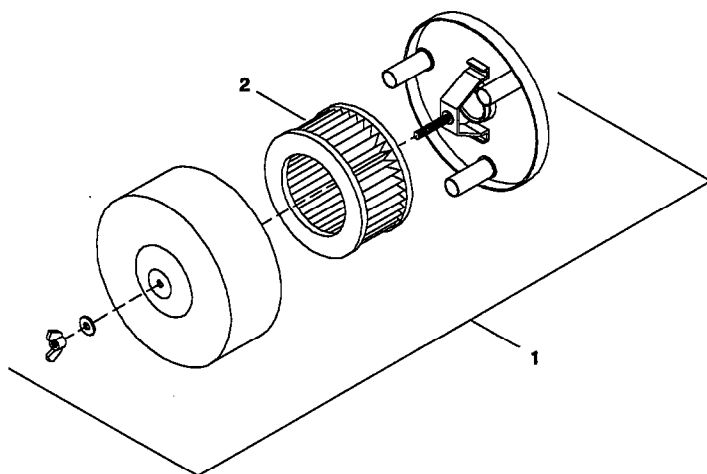
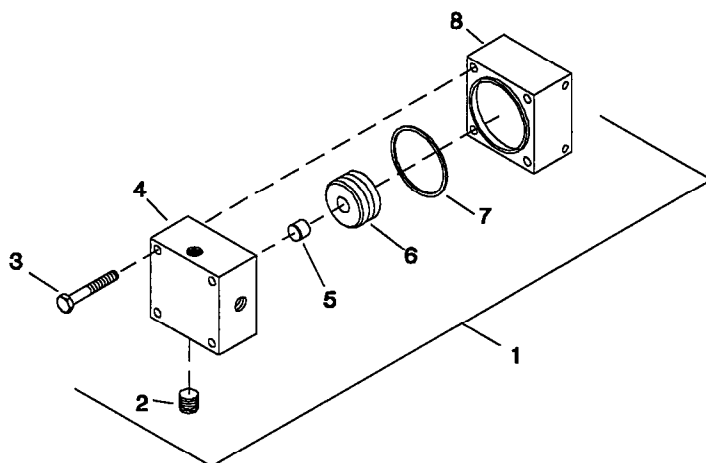


FIGURE 2. UL 105A VALVE.

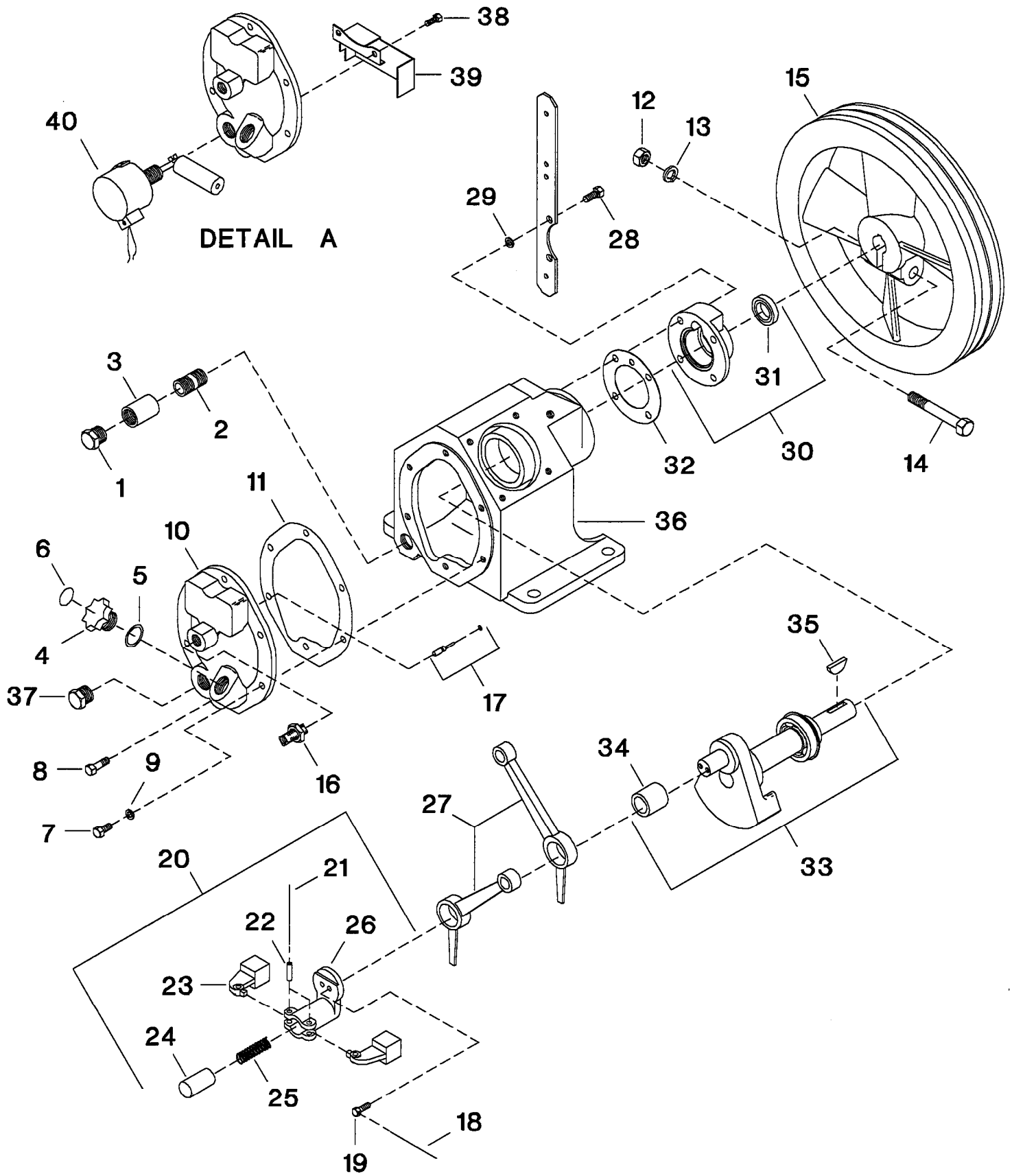


| REF. NO. | PART NO. | DESCRIPTION                   | QTY. | SPARES |   |   |
|----------|----------|-------------------------------|------|--------|---|---|
|          |          |                               |      | 1      | 2 | 3 |
| 1-1      | 32170946 | FILTER COMPLETE - INLET       | 1    |        |   |   |
| 1-2      | 32170979 | • ELEMENT, FILTER - 10 MICRON | 1    | 1      | 1 | 1 |

IF FILTER ELEMENT REPLACEMENT IS DESIRED WE RECOMMEND AN ECONOMICAL FILTER KIT. SEE PAGE 10.

| REF. NO. | PART NO. | DESCRIPTION                      | QTY. | SPARES |   |   |
|----------|----------|----------------------------------|------|--------|---|---|
|          |          |                                  |      | 1      | 2 | 3 |
| 2-1      | 32211724 | VALVE, UL 105A                   | 1    |        |   |   |
| 2-2      | 95372199 | • PLUG, PIPE - 1/8               | 1    |        |   |   |
| 2-3      | 95116745 | • CAPSCREW - HEX 1/4-20 X 1- 3/4 | 4    |        |   |   |
| 2-4      | 30209548 | • BODY, VALVE SEAT               | 1    |        |   |   |
| 2-5      | 30217624 | • SEAT, VALVE - CONDENSATE DRAIN | 1    | 1      | 1 | 2 |
| 2-6      | 30221287 | • PISTON                         | 1    |        |   |   |
| 2-7      | 95018420 | • O-RING                         | 1    | 1      | 1 | 2 |
| 2-8      | 30823587 | • CYLINDER                       | 1    |        |   |   |

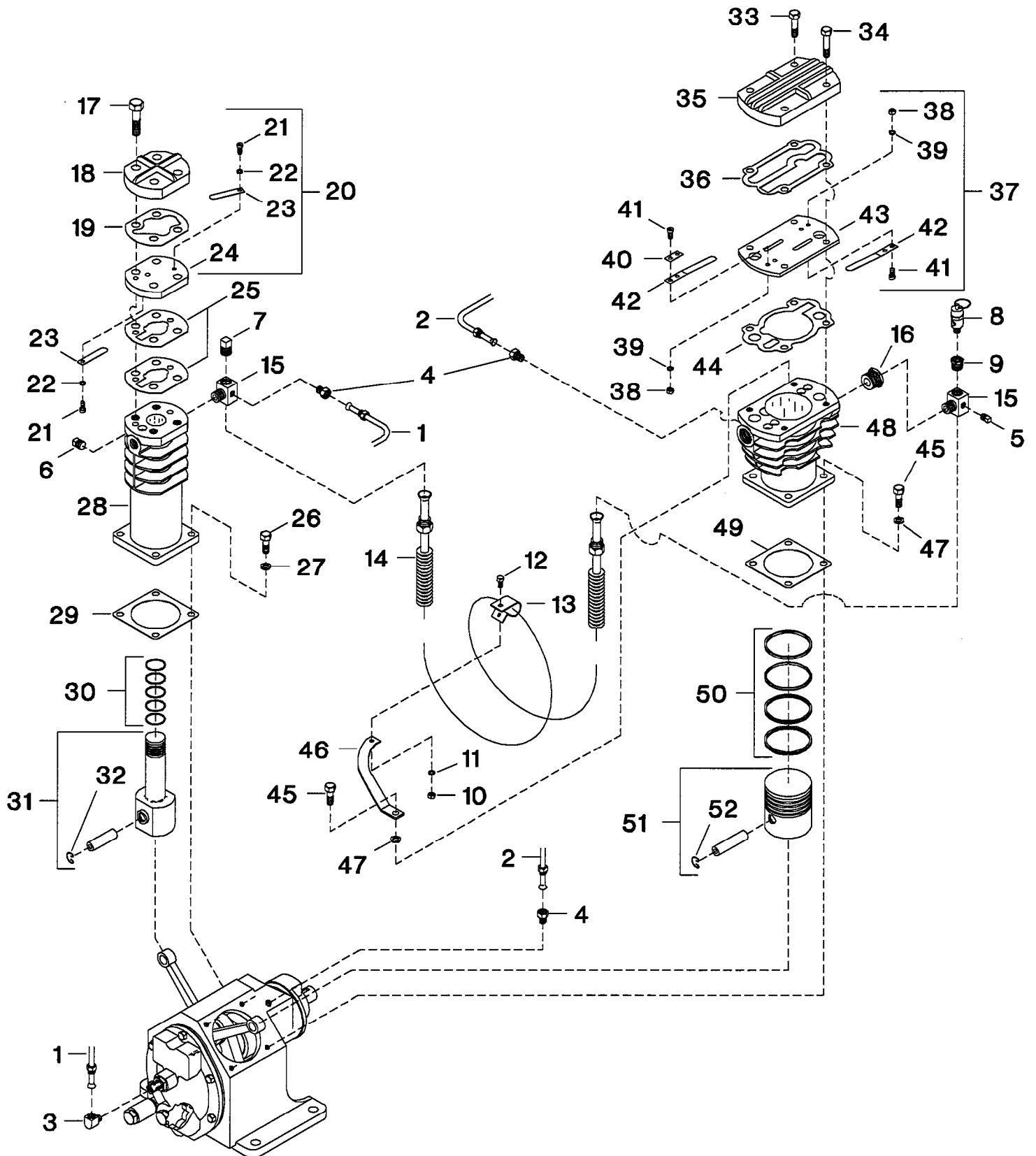
FIGURE 3. COMPRESSOR FRAME ASSEMBLY.



| REF.<br>NO.               | PART NO. | DESCRIPTION                        | QTY. | SPARES |   |   |
|---------------------------|----------|------------------------------------|------|--------|---|---|
|                           |          |                                    |      | 1      | 2 | 3 |
| 3-1                       | 95344651 | PLUG, PIPE - HEX HEAD 1/2"         | 1    |        |   |   |
| 3-2                       | 95640009 | NIPPLE, LONG - 1/2 X 2"            | 1    |        |   |   |
| 3-3                       | 32179061 | COUPLING, PIPE - 1/2"              | 1    |        |   |   |
| 3-4                       | 30216055 | PLUG, OIL FILLER - COMPLETE        | 1    |        |   |   |
| 3-5                       | 95018149 | • O - RING                         | 1    | 1      | 1 | 2 |
| 3-6                       | 32000655 | DECAL, HAND TIGHTEN                | 1    |        |   |   |
| 3-7                       | 95227302 | CAPSCREW - HEX 5/16-18 X 7/8"      | 5    |        |   |   |
| 3-8                       | 95079984 | CAPSCREW - HEX 5/16-18 X 1- 1/4"   | 1    |        |   |   |
| 3-9                       | 95674651 | GASKET - COPPER WASHER             | 1    |        |   |   |
| 3-10                      | 37127107 | COVER, FRAME END                   | 1    |        |   |   |
| 3-11                      | 30299226 | GASKET, FRAME END COVER            | 1    | 1      | 1 | 2 |
| 3-12                      | 95077798 | NUT - HEX 1/2-13                   | 1    |        |   |   |
| 3-13                      | 95716890 | LOCKWASHER, SPRING - 1/2"          | 1    |        |   |   |
| 3-14                      | 95053682 | CAPSCREW - HEX 1/2-13 X 3- 1/2"    | 1    |        |   |   |
| 3-15                      | 30212906 | WHEEL, V-BELT                      | 1    |        |   |   |
| 3-16                      | 37007689 | VALVE, PILOT                       | 1    |        | 1 | 1 |
| 3-17                      | 37002417 | PIN ASSEMBLY, THRUST               | 1    | 1      | 1 | 2 |
| 3-18                      | 90799289 | LOCKWIRE, 12 GA X 5"               | 1    |        |   |   |
| 3-19                      | 95044111 | CAPSCREW - HEX 1/4-20 X 3/4"       | 2    |        |   |   |
| 3-20                      | 30210264 | CAP ASSEMBLY, CRANKPIN             | 1    |        |   |   |
| 3-21                      | 32006587 | • LOCKWIRE, 12 GA X 4"             | 1    |        |   |   |
| 3-22                      | 30215008 | • PIN, CENTRIFUGAL UNLOADER WEIGHT | 2    |        |   |   |
| 3-23                      | 30221725 | • WEIGHT, CENTRIFUGAL UNLOADER     | 2    |        |   |   |
| 3-24                      | 30216113 | • PLUNGER, CENTRIFUGAL UNLOADER    | 1    |        |   | 1 |
| 3-25                      | 30416978 | • SPRING, CENTRIFUGAL UNLOADER     | 1    |        |   | 1 |
| 3-26                      | 30210454 | • BODY, CRANKPIN CAP               | 1    |        |   |   |
| 3-27                      | 32004145 | ROD, CONNECTING                    | 2    |        | 2 | 2 |
| 3-28                      | 95227302 | CAPSCREW - HEX 5/16-18 X 7/8"      | 4    |        |   |   |
| 3-29                      | 95674651 | GASKET - COPPER WASHER             | 4    |        |   |   |
| 3-30                      | 32027914 | COVER ASSEMBLY, SHAFT END          | 1    |        |   |   |
| 3-31                      | 32204521 | • SEAL, OIL                        | 1    |        | 1 | 2 |
| 3-32                      | 30295034 | GASKET, SHAFT END COVER            | 1    | 1      | 1 | 2 |
| 3-33                      | 30211577 | CRANKSHAFT - COMPLETE              | 1    |        |   |   |
| 3-34                      | 30289813 | • BUSHING, CRANKPIN                | 1    |        |   |   |
| 3-35                      | 95433173 | • KEY, WOODRUFF                    | 1    |        |   |   |
| 3-36                      | 30222327 | FRAME, COMPRESSOR                  | 1    |        |   |   |
| 3-37                      | 95200333 | PLUG, PIPE - HEX HEAD 3/4"         | 1    |        |   |   |
| <b>OPTIONAL EQUIPMENT</b> |          |                                    |      |        |   |   |
| <b>DETAIL A</b>           |          |                                    |      |        |   |   |
| 3-38                      | 95053070 | CAPSCREW - HEX 1/4-20 X 1/2        | 2    |        |   |   |
| 3-39                      | 32270639 | BAFFLE, LOW OIL LEVEL SWITCH       | 1    |        |   |   |
| 3-40                      | 32276313 | SWITCH, LOW OIL LEVEL              | 1    |        |   |   |

IF BEARING AND CONNECTING ROD REPLACEMENT IS DESIRED, WE RECOMMEND A BEARING/CONNECTING ROD KIT. SEE PAGE 10.

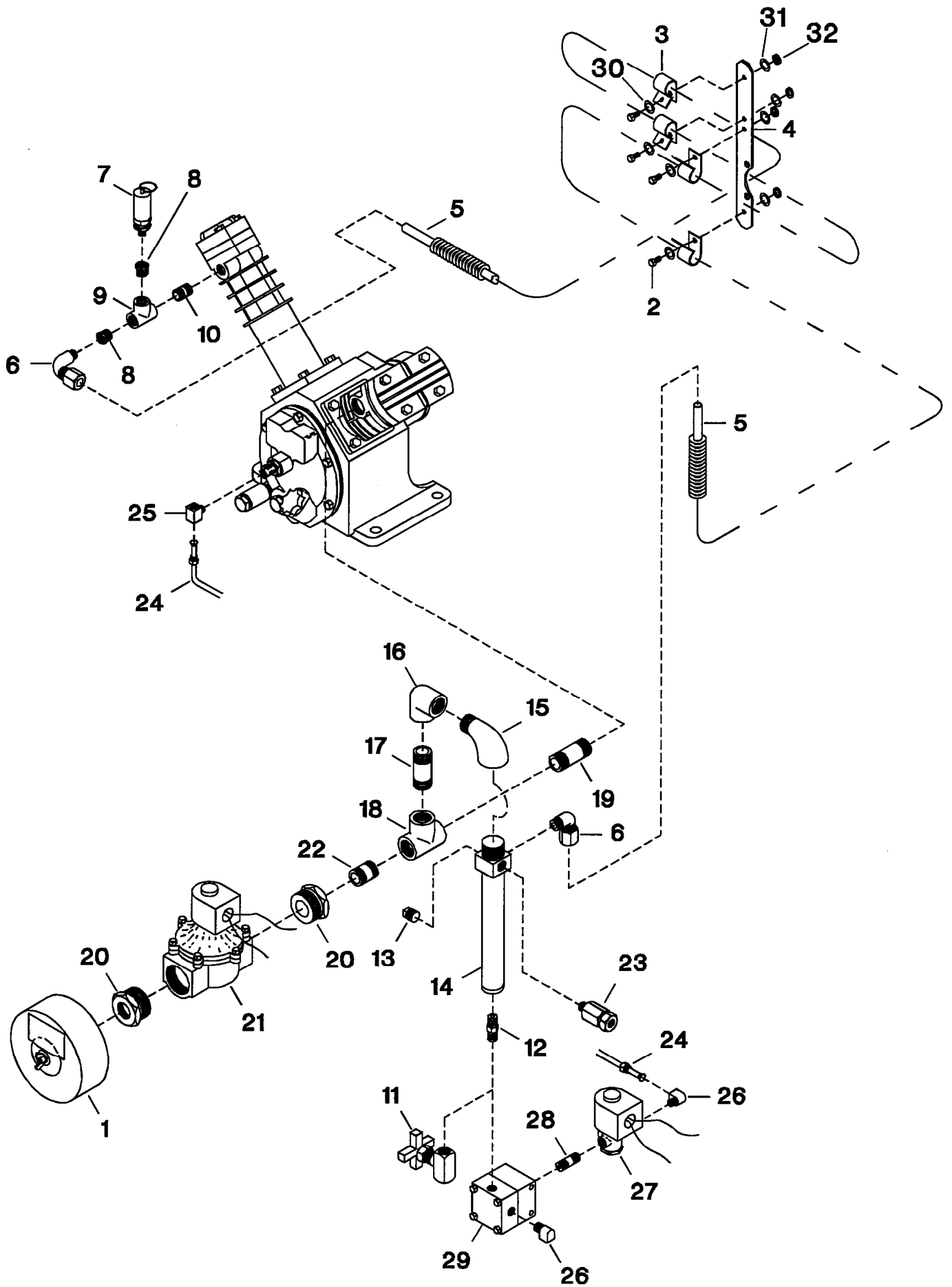
FIGURE 4. MODEL 231 BARE COMPRESSOR.



| REF.<br>NO. | PART NO. | DESCRIPTION                                   | QTY. | SPARES |   |   |
|-------------|----------|---|------|--------|---|---|
|             |          |   |      | 1      | 2 | 3 |
| 4-1         | 37131349 | TUBE ASSEMBLY, INTERCOOLER/PILOT VALVE        | 1    |        |   |   |
| 4-2         | 37131216 | TUBE ASSEMBLY, BREATHER                       | 1    |        |   |   |
| 4-3         | 95031860 | TUBE ELBOW - 5/16 X 1/8"                      | 1    |        |   |   |
| 4-4         | 95082483 | CONNECTOR, MALE - 5/16 X 1/8"                 | 3    |        |   |   |
| 4-5         | 95033585 | PLUG, PIPE - SQUARE HEAD 1/8"                 | 1    |        |   |   |
| 4-6         | 95252409 | PLUG, PIPE - SQUARE HEAD 1/4"                 | 1    |        |   |   |
| 4-7         | 95033601 | PLUG, PIPE - SQUARE HEAD 3/8"                 | 1    |        |   |   |
| 4-8         | 30812119 | VALVE, RELIEF - 125 PSIG                      | 1    |        | 1 | 2 |
| 4-9         | 95038147 | BUSHING, REDUCING - 3/8 X 1/4"                | 1    |        |   |   |
| 4-10        | 95077681 | NUT - HEX 1/4-20                              | 1    |        |   |   |
| 4-11        | 95043196 | LOCKWASHER, SPRING - 1/4"                     | 1    |        |   |   |
| 4-12        | 95053070 | CAPSCREW - HEX 1/4-20 X 1/2"                  | 1    |        |   |   |
| 4-13        | 32065641 | CLAMP, TUBE - 3/4"                            | 1    |        |   |   |
| 4-14        | 32042632 | TUBE ASSEMBLY, FINNED - INTERCOOLER           | 1    |        | 1 | 1 |
| 4-15        | 30282727 | TEE, MANIFOLD - INLET/DISCHARGE               | 2    |        |   |   |
| 4-16        | 95037446 | BUSHING, REDUCING - 3/4 X 3/8"                | 1    |        |   |   |
| 4-17        | 95104196 | CAPSCREW - HEX 1/2-13 X 2"                    | 4    |        |   |   |
| 4-18        | 37127305 | AIRHEAD - HIGH PRESSURE                       | 1    |        |   |   |
| 4-19        | 30280341 | GASKET, AIRHEAD                               | 1    | 1      | 1 | 2 |
| 4-20        | 32058760 | ASSEMBLY, SPACER/VALVE - HIGH PRESSURE        | 1    |        | 1 | 1 |
| 4-21        | 32035495 | • SCREW, FILLISTER HEAD - 1/4-20 X 1/4"       | 2    |        |   |   |
| 4-22        | 30326573 | • WASHER, FLAT - 1/4"                         | 2    |        |   |   |
| 4-23        | 30220115 | • VALVE FINGER                                | 2    | 2      | 2 | 2 |
| 4-24        | 32015661 | • SPACER                                      | 1    |        |   |   |
| 4-25        | 30278964 | GASKET, SPACER                                | 2    | 2      | 2 | 4 |
| 4-26        | 95079612 | CAPSCREW - HEX 3/8-16 X 1"                    | 4    |        |   |   |
| 4-27        | 95674677 | GASKET, COPPER - 3/8"                         | 4    |        |   |   |
| 4-28        | 37128550 | CYLINDER, AIR - 1.25" - HIGH PRESSURE         | 1    |        |   |   |
| 4-29        | 30294227 | GASKET, FLANGE                                | 1    | 1      | 1 | 2 |
| 4-30        | 37138229 | SET, RING - 1.25                              | 1    | 1      | 1 | 2 |
| 4-31        | 30215412 | PISTON, AIR - COMPLETE - 1.25 - HIGH PRESSURE | 1    |        | 1 | 1 |
| 4-32        | 35151067 | • RING, LOCK                                  | 2    |        |   |   |
| 4-33        | 95103792 | CAPSCREW - HEX 3/8-16 X 1- 1/2"               | 3    |        |   |   |
| 4-34        | 95103800 | CAPSCREW - HEX 3/8-16 X 1- 3/4"               | 1    |        |   |   |
| 4-35        | 37127354 | AIRHEAD - LOW PRESSURE                        | 1    |        |   |   |
| 4-36        | 30280507 | GASKET, AIRHEAD                               | 1    | 1      | 1 | 2 |
| 4-37        | 32141194 | ASSEMBLY, SPACER/VALVE - LOW PRESSURE         | 1    |        | 1 | 1 |
| 4-38        | 95416335 | • NUT - HEX 1/4-20                            | 4    |        |   |   |
| 4-39        | 32035479 | • LOCKWASHER, SPRING - 1/4"                   | 4    |        |   |   |
| 4-40        | 32139891 | • SHIM, FINGER VALVE                          | 1    |        |   |   |
| 4-41        | 32035461 | • SCREW, FILLISTER HEAD - 1/4-20 X 1/2"       | 4    |        |   |   |
| 4-42        | 30221170 | • VALVE, FINGER                               | 2    | 2      | 2 | 2 |
| 4-43        | 37127248 | • SPACER                                      | 1    |        |   |   |
| 4-44        | 30280499 | GASKET, SPACER                                | 1    | 1      | 1 | 2 |
| 4-45        | 95053146 | CAPSCREW - HEX 3/8-16 X 7/8"                  | 4    |        |   |   |
| 4-46        | 30298202 | BRACE, INTERCOOLER                            | 1    |        |   |   |
| 4-47        | 95674677 | GASKET, COPPER - 3/8"                         | 4    |        |   |   |
| 4-48        | 37130630 | CYLINDER, AIR - 3" - LOW PRESSURE             | 1    |        |   |   |
| 4-49        | 30294227 | GASKET, FLANGE                                | 1    | 1      | 1 | 2 |
| 4-50        | 32194276 | SET, RING - 3"                                | 1    | 1      | 1 | 2 |
| 4-51        | 30292429 | PISTON, AIR - COMPLETE - 3" - LOW PRESSURE    | 1    |        | 1 | 1 |
| 4-52        | 35151067 | • RING, LOCK                                  | 2    |        |   |   |

IF PISTON RING REPLACEMENT IS DESIRED, WE RECOMMEND AN ECONOMICAL RING/GASKET KIT. IF VALVE REPLACEMENT IS DESIRED, WE RECOMMEND AN ECONOMICAL VALVE/GASKET KIT. SEE PAGE10.

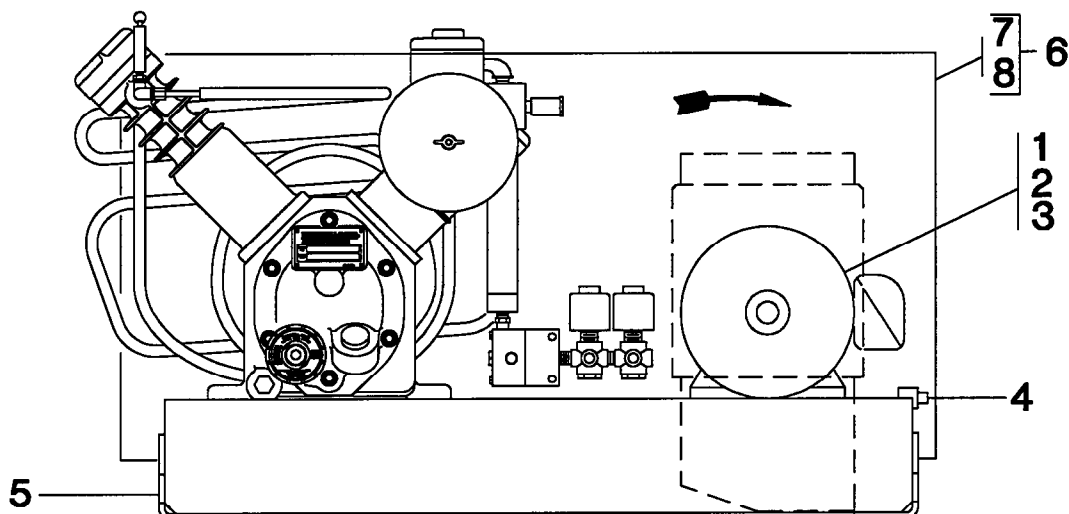
FIGURE 5. AFTERCOOLER &amp; DRAIN LEG ASSEMBLY.





| REF.<br>NO. | PART NO. | DESCRIPTION  | QTY. | SPARES |   |   |
|-------------|----------|--|------|--------|---|---|
|             |          |  |      | 1      | 2 | 3 |
| 5-1         | 32170946 | FILTER COMPLETE - INLET - SEE FIGURE 1.  | 1    |        |   |   |
| 5-2         | 32224008 | CAPSCREW - FILLISTER HEAD 1/4-20 X 1/2"  | 4    |        |   |   |
| 5-3         | 32065641 | CLAMP, TUBE - 3/4"   | 4    |        |   |   |
| 5-4         | 32499121 | BRACE, AFTERCOOLER TUBE  | 1    |        |   |   |
| 5-5         | 30335343 | TUBING, FINNED - AFTERCOOLER   | 1    |        | 1 | 1 |
| 5-6         | 95244364 | ELBOW, TUBE 3/8 X 1/4"   | 2    |        |   | 2 |
| 5-7         | 31385511 | VALVE, RELIEF - 800 PSIG   | 1    |        | 1 | 2 |
| 5-8         | 32179046 | BUSHING, REDUCING - 3/8 X 1/4"   | 2    |        |   |   |
| 5-9         | 95007852 | TEE, PIPE - 3/8"   | 1    |        |   |   |
| 5-10        | 95691077 | NIPPLE, CLOSE - 3/8 X 1"   | 1    |        |   |   |
| 5-11        | 30666002 | VALVE, NEEDLE GLOBE  | 1    |        |   |   |
| 5-12        | 32175051 | NIPPLE, HEX 1/4"   | 1    |        |   |   |
| 5-13        | 95033601 | PLUG, PIPE - SQUARE HEAD 3/8"  | 1    |        |   |   |
| 5-14        | 30286389 | ASSEMBLY, CONDENSATE LEG   | 1    |        |   |   |
| 5-15        | 95040929 | ELBOW, REDUCING STREET - 1 X 3/4"  | 1    |        |   |   |
| 5-16        | 95069332 | ELBOW, PIPE - 3/4"   | 1    |        |   |   |
| 5-17        | 95298097 | NIPPLE, LONG - 3/4 X 2- 1/2"   | 1    |        |   |   |
| 5-18        | 95063483 | TEE, PIPE - 3/4"   | 1    |        |   |   |
| 5-19        | 95298097 | NIPPLE, LONG - 3/4 X 2- 1/2"   | 1    |        |   |   |
|             |          | NOTE: ITEMS 5-20 THROUGH 5-29 ARE USED WITH OPTIONAL CONSTANT SPEED CONTROL AND AUTO CONDENSATE DRAIN. |      |        |   |   |
| 5-20        | 32178980 | BUSHING, REDUCING - 1-1/2 X 3/4"   | 2    |        |   |   |
| 5-21        | 32028508 | VALVE, SOLENOID - 2 WAY  | 1    |        |   | 1 |
| 5-22        | 95489456 | NIPPLE, CLOSE - 3/4 X 1- 3/8"  | 1    |        |   |   |
| 5-23        | 32162901 | VALVE, CHECK - HIGH PRESSURE   | 1    |        |   | 1 |
| 5-24        | 32148066 | ASSEMBLY, TUBE - FRAME END COVER/UL 105A VALVE   | 1    |        |   |   |
| 5-25        | 95007522 | TEE, MALE BRANCH - 5/16 X 1/8"   | 1    |        |   |   |
| 5-26        | 95110441 | ELBOW, TUBE - 5/16 X 1/4"  | 2    |        |   |   |
| 5-27        | 32039778 | VALVE, SOLENOID - 3 WAY  | 1    |        |   | 1 |
| 5-28        | 95376372 | NIPPLE, SHORT - 1/4 X 1- 1/2"  | 1    |        |   |   |
| 5-29        | 32211724 | ASSEMBLY, UL 105A VALVE - CONDENSATE DRAIN - SEE FIGURE 2.   |      |        |   |   |
| 5-30        | 95094298 | WASHER, 1/4"   | 4    |        |   |   |
| 5-31        | 32035479 | WASHER, SPRING - 1/4"  | 4    |        |   |   |
| 5-32        | 95077681 | NUT, HEX - 1/4-20  | 4    |        |   |   |

FIGURE 6. COMPRESSOR DRIVE, SUB-BASE, AND ACCESSORIES.



| REF. NO.           | PART NO. | DESCRIPTION                | QTY. | SPARES |   |   |
|--------------------|----------|----------------------------|------|--------|---|---|
|                    |          |                            |      | 1      | 2 | 3 |
| 6-1                | *        | MOTOR, ELECTRIC            | 1    |        |   |   |
| 6-2                | *        | PULLEY, MOTOR              | 1    |        |   |   |
| 6-3                | 95099487 | BELT, "V"                  | 1    |        | 1 | 1 |
| 6-4                | 32192171 | TIGHTENER, BELT - COMPLETE | 1    |        |   |   |
| 6-5                | 32001042 | SUB-BASE ASSEMBLY          | 1    |        |   |   |
| 6-6                | 32002602 | BELTGUARD - COMPLETE       | 1    |        |   |   |
| 6-7                | 32160657 | • BACK, BELTGUARD          | 1    |        |   |   |
| 6-8                | 32170748 | • FRONT, BELTGUARD         | 1    |        |   |   |
| OPTIONAL EQUIPMENT |          |                            |      |        |   |   |
| NI                 | 37005840 | SWITCH, PRESSURE - NEMA 1  | 1    |        |   | 1 |
| NI                 | 32040107 | SWITCH, PRESSURE - NEMA 4  | 1    |        |   | 1 |
| NI                 | 37199957 | SWITCH, PRESSURE - NEMA 7  | 1    |        |   | 1 |

\* SPECIFY DISCHARGE PRESSURE OF COMPRESSOR AND COMPLETE MOTOR NAMEPLATE DATA.

NI = NOT ILLUSTRATED

### STEP SAVER KITS

| PART NO. | DESCRIPTION                 |
|----------|-----------------------------|
| 32171464 | KIT, FILTER                 |
| 32134090 | KIT, VALVE/GASKET           |
| 32202400 | KIT, RING/GASKET            |
| 32127359 | KIT, BEARING/CONNECTING ROD |
| 30420343 | KIT, GASKET                 |

### LUBRICANT

| PART NO. | DESCRIPTION                  |
|----------|------------------------------|
| 32318875 | QUART, ALL SEASON T30 SELECT |
| 32318883 | CASE, ALL SEASON T30 SELECT  |