

W7000 Series Cordless Impact Wrench - Parts List

Item	Part Description	Part Number (CCN)	Item	Part Description	Part Number (CCN)
*	Hammer Case Kit	W7150-K727 (48391494)	21	Trigger & Battery Connector Kit	
1	Screw, Hammer Case (4 Required)	---		for W7150, W7150P, W7250 with Brake	W7150-K93 (48401806)
2	Warning Label	---		for W7150, W7150P, W7250 without Brake	W7150-K93NB (47517641001)
3	Hammer Case Assembly	---		for W7150EU, W7150EU-P, W7250EU with Brake	W7150EU-K93 (48401814)
4	Washer, Rubber	---		for W7150EU, W7150EU-P, W7250EU without Brake	W7150EU-K93NB (47517642001)
5	Washer, Steel	---			
*	Socket Retainer Kit For W7150, W7150EU, W7250, W7250EU	2125QTI-K425 (80107733)	*	Housing Kit	W7150-K40 (48391320)
6	Socket Retainer Ring	---	22	Right Housing	---
7	O-Ring	---	23	Left Housing	---
*	Socket Retainer Kit For W7150P, W7150EU-P	2125PTI-K425 (80107725)	24	Serial Number Label	---
8	Spring	---	25	Information Label	---
9	Socket Retainer Pin	---	26	Screw, Housing (10 Required)	---
*	Anvil Kit For W7150, W7150EU	W7150-K626 (48401756)	*	Fastener Kit	W7150-K105 (48391379)
10	Anvil 1/2-in SQ Drive, Retaining Ring	---	1	Screw, Hammer Case (4 Required)	---
6	Socket Retainer Ring	---	26	Screw, Housing (10 Required)	---
7	O-Ring	---	*	Label Kit	W7150-K99 (48391387)
*	Anvil Kit For W7250, W7250EU	W7250-K414 (48401764)	2	Warning Label	---
11	Anvil 1/2-in SQ Drive, 2-in Extended	---	24	Serial Number Label	---
6	Socket Retainer Ring	---	25	Information Label	---
7	O-Ring	---	*	Bracket Kit	W7150-K365 (47518084001)
*	Anvil Kit For W7150P, W7150EU-P	W7150P-K726 (47518085001)	27	Bracket	---
12	Anvil 1/2-in SQ Drive, Retaining Pin	---	28	Ring	---
8	Spring	---	*	Protective Tool Boot	W7150-BOOT (48401855)
9	Socket Retainer Pin	---	*	Grease	---
13	Impact Mechanism Kit	W7150-K724 (48391536)		IR #105 (1 lb can) for Impact Mechanism and Anvil	105 1LB
*	Planetary Gear Kit	W7150-K37 (48391429)		IR #105 (8 lb can) for Impact Mechanism and Anvil	105 8LB
14	Planet Gear (3 Required)	---		IR #67 (1 lb can) for Gearing	67 1LB
15	Pin (3 Required)	---		IR #67 (8 lb can) for Gearing	67 8LB
16	Bearing, Gear Carrier	---		Grease Gun	R000A2-228 (03095015)
17	Ring Gear	---	29	20V Li-Ion Battery Pack (3.0 Ah)	BL2010 (48386791)
18	Ring Gear Holder	---	*	Protective Battery Boot For BL2010	BL2010-BOOT
19	Electric Motor Kit		*	Battery Charger	BC1120 (47088752)
	for W7150, W7150P, W7250	W7150-K54 (48401772)	*	Carrying Case	W7000-CASE (48380976)
	for W7150EU, W7150EU-P, W7250EU	W7150EU-K54 (48401780)	*	Carrying Case Latch	W7000-LATCH (47507275001)
20	Forward/Reverse Actuator	W7150-K75 (48391312)			

* Not illustrated

Parts and Maintenance

When tool life has expired, it is recommended that the tool be disassembled, degreased and parts separated by material for proper recycling.

Tool repair and maintenance should only be carried out by an authorized Service Center.

Refer all communications to the nearest **Ingersoll Rand** office or distributor.

Related Documentation

Manuals can be downloaded from ingersollrandproducts.com.

For additional information, refer to:

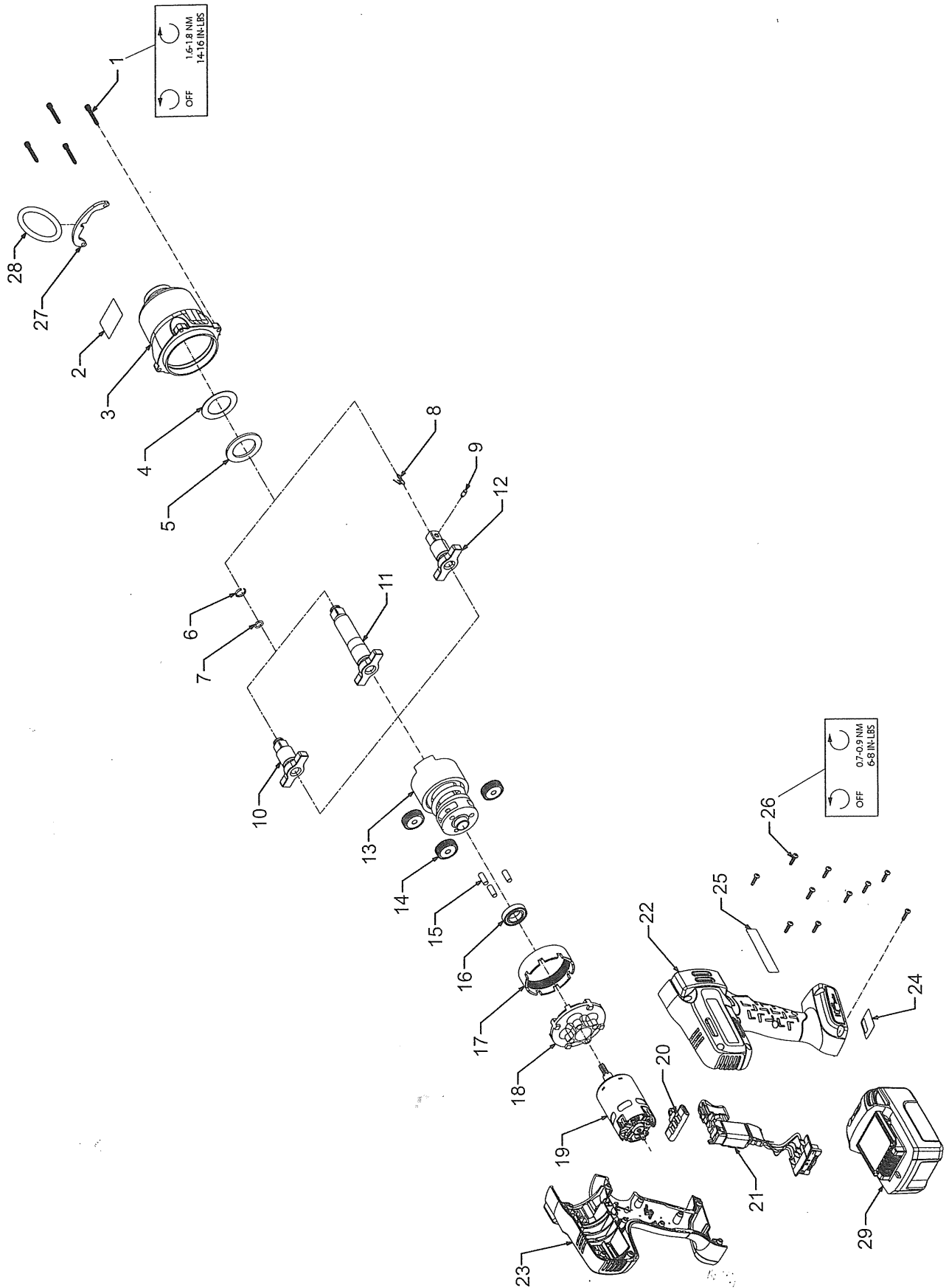
Cordless Impact Wrench Product Safety Information Manual 04581146.

Cordless Impact Wrench Product Information Manual 47122262 (for models W7150/W7150P/W7250).

Cordless Impact Wrench Product Information Manual 48391130 (for models W7150EU/W7150EU-P/W7250EU).



W7000 Series Cordless Impact Wrench - Exploded View



(Dwg. 48380281)



47122288
Edition 8
July 2014