



TECHNICAL DATA SHEET

BEKINA® BOOTS Steplite® Food (Steplite®)

BEKINA® BOOTS

| Size range | |
|--|-------------|
| • EU | 36 - 48 |
| • UK | 3.5 - 13 |
| • US | 4 - 15 |
| Weight / pair (42) | |
| • Non-safety (white) | +/- 1.300 g |
| • Steel toe cap (white / green / blue) | +/- 1.490 g |
| • Steel toe cap & midsole (yellow) | +/- 1.630 g |

Leg

| A. Dimensions | | | |
|---------------------|----------------------------------|----------------------------------|----------------------------------|
| • Height | outer measure: 38 cm | | |
| | cutting edge: 31 cm | | |
| • Foot length | outer measure: 30 cm | | |
| | inner measure: 28 cm | | |
| B. Thickness | | | |
| • Upper edge | 2,85 - 3,20 mm | | |
| • Calf | 2,90 - 3,10 mm | | |
| • Shinbone | 2,80 - 2,90 mm | | |
| • Ankle | 3,50 - 3,90 mm | | |
| • Heel | 3,90 - 5,40 mm | | |
| • Toe | 3,70 - 5,00 mm | | |
| C. Raw material | | | |
| | NEOTANE® | | |
| D. Specific weight | | | |
| | 0,65 - 0,70 g/ml | | |
| E. Colour | | | |
| | white / green / blue / yellow | | |
| F. Tensile strength | | | |
| (incl. lining) | 893 N/cm ² 8.39 MPa | | |
| G. Elongation | | | |
| (incl. lining) | 1145% +/- 20% | | |
| H. Hardness | | | |
| | 42° - 47° Shore A | | |
| I. Tear strength | | | |
| | 11,1 N/mm | | |
| J. Aging | | | |
| | 7 days at 70° | 14 days at 70° | 21 days at 70° |
| • tensile strength | 721 N/cm ² 7.21 MPa | 963 N/cm ² 9.63 MPa | 804 N/cm ² 8.04 MPa |
| • elongation | 1251% +/- 20% | 1489,2% +/- 20% | 1349% +/- 20% |
| • tear strength | 10,5 N/mm | 10,3 N/mm | 10,7 N/mm |



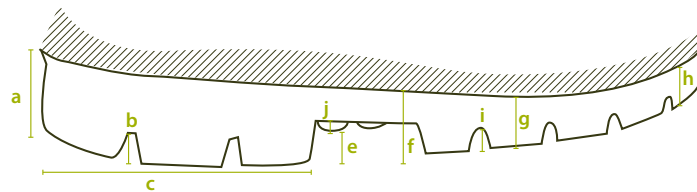
TECHNICAL DATA SHEET

BEKINA® BOOTS Steplite® Food (Steplite®)

| | |
|-------------------------------------|-------------------|
| K. Chemical resistance | |
| | see detailed list |
| L. Environmental temperature | |
| • Maximum | +/- 100°C |
| • Minimum | -20°C |

Lining

| | |
|--------------------|---------------------------|
| A. Material | |
| | PU coating on tricot |
| B. Seams | |
| | in front & middle of sole |
| | stitched |



Sole profile

| | |
|--------------------------------------|---------------------------|
| A. Dimensions | |
| • Heel | |
| • Thickness | (a) 32 mm 1.26 inches |
| • Profile depth | (b) 8,6 mm 0.34 inches |
| • Length | (c) 90,3 mm 3.55 inches |
| • Width | 81,2 mm 3.19 inches |
| • Middle foot | |
| • Height | (e) 12 mm 0.47 inches |
| • Ladder anti-slip grips | (j) 2 mm 0.08 inches |
| • Sole | |
| • Thickness | (f) 23,3 mm 0.92 inches |
| | (g) 20,0 mm 0.79 inches |
| | (h) 17,9 mm 0.70 inches |
| • Profile depth | (i) 6.75 mm 0.26 inches |
| B. Raw material | |
| | NEOTANE® |
| C. Specific weight | |
| | 0,65 - 0,70 g/ml |
| D. Colour | |
| | black / blue |
| E. Mechanical characteristics | |
| | see leg (f) - (j) |



TECHNICAL DATA SHEET

BEKINA® BOOTS Steplite® Food (Steplite®)

| | |
|---|--|
| F. Energy - absorption of the heel | 30 - 35 (min 20) |
| G. Antistatic | dry: $2,2 \times 10^9$ Ohm wet: $4,0 \times 10^7$ Ohm |
| H. Abrasion mm³ | 35 |
| I. Hardness | 62,5° +/- 2,5° Shore A |
| J. Slip resistance of sole | SRC |
| K. Chemical resistance | See enclosed list |

Safety

| Toe cap & sole | Standard | Required | Type | Result |
|---|----------------|----------|----------|--------|
| ● Penetration resistance of sole | ISO 20345:2011 | > 1100 N | metallic | 1430 N |
| ● Impact resistance on toe cap (load 200 N) | EN 12568 | > 14 mm | metallic | 17 mm |
| ● Compression resistance of toe cap | ISO 20345:2011 | > 14 mm | metallic | 25 mm |
| ● Width of steel toe cap | 87,3 mm | | | |
| ● Height of steel toe cap | 44,2 mm | | | |

Accessories

| | |
|---------------|---------------------|
| Insole | |
| ● Bottom | black gel latex |
| • Thickness | 1 mm 0.039 inches |
| • Shape | embossed |
| ● Interlayer | non-woven textile |
| ● Upper | green woven textile |
| ● Washable | 30°C |