

# TECHNICAL DATA SHEET

**IMPULSE Lady aqua Low ESD S1PS No. 74811**


**Sz. 35 - 42**



## LABELLING ACCORDING TO STANDARD

Standard for safety footwear EN ISO 20345:2022 S1PS	Basic requirement for S1PS: <b>A</b> Antistatic shoe - <b>E</b> Energy absorption in the heel - <b>P</b> Steel midsole - <b>S</b> Textile penetration protection - Closed heel area - Basic Slip resistance test on ceramic tile + NaLS (soap solution)
Additional requirements	<b>FO FUEL RESISTANCE</b> <b>SR SLIP RESISTANCE</b> on ceramic tile with glycerine.

## FORM

Ladies' safety shoe 	Form A - in size 38, the upper height must not exceed 10.4 cm.
--	--

## FIT

Ladies' fit	The shoe last is ideally tailored to the ergonomics of female feet.
-------------	---

## AREAS OF APPLICATION

Areas of application	Dry work areas Industry, storage, transport, assembly etc. Areas where there is a risk of penetration from pointed and sharp objects (S1P/S1PL/S1PS)  Areas where there is a risk of electrostatic discharge (ESDS/ESD)
----------------------	---

## FEATURES

ESD equipment	Thanks to its excellent discharge capability, the shoe is suitable for work in ESD sensitive or electrostatically protected areas (EPA). The shoes comply to the standard 61340-5-1.
---------------	--



## FEATURES

Certification in accordance with DGUV rule 112-191	<ul style="list-style-type: none"> <li>• Certified for orthopaedic inserts</li> </ul> 
Padded upper edge	<ul style="list-style-type: none"> <li>• Excellent wearing comfort: the padded upper edge protects the Achilles tendon.</li> </ul>
Full, padded bellows tongue	<ul style="list-style-type: none"> <li>• Excellent wearing comfort: The tongue prevents pressure marks and avoids dirt from entering into the shoe.</li> </ul>
Perforated upper	<ul style="list-style-type: none"> <li>• The perforation supports an optimum air circulation inside the shoe and thus contributes to a pleasant wearing comfort.</li> </ul>
Reflective material	<ul style="list-style-type: none"> <li>• Good visibility in the dark</li> </ul> 
Elastic lacing system	<ul style="list-style-type: none"> <li>• For an individual adjustment to the foot</li> <li>• With quick-locking system</li> </ul>
Leather-free equipment	<ul style="list-style-type: none"> <li>• Suitable for persons allergic to leather</li> </ul>


## UPPER MATERIAL

Microfibre	<ul style="list-style-type: none"> <li>• Synthetic material</li> <li>• Particularly soft</li> <li>• Retains its shape</li> <li>• Tear-resistant</li> <li>• Quick drying</li> <li>• Abrasion-resistant and light</li> </ul>
------------	--

## LINING

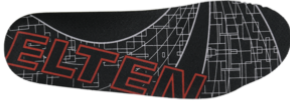
Breathable fabric lining	<ul style="list-style-type: none"> <li>• Climate-regulating</li> <li>• Good ventilation</li> <li>• Skin-friendly</li> <li>• High absorption and emission of moisture</li> </ul>
Heel pocket lining	<ul style="list-style-type: none"> <li>• The abrasion-resistant microfibre material is particularly sturdy and provides for a pleasant wearing comfort.</li> </ul>

## TOE PROTECTION CAP

<p>Steel toe cap</p> 	<ul style="list-style-type: none"> <li>• Protection against impacts of min. 200 joules and pressure loading of min. 15 kN</li> <li>• Permanent edge coverage for cushioning</li> <li>• Ergonomically shaped</li> <li>• Comfortable toe room</li> <li>• Good coverage of the little toe area</li> </ul>
--	--

## INLAY SOLE

Full-length inlay sole  
ESD PRO Lady Y



- ESD EQUIPMENT: Protection against electrostatic discharge (ESD). The full-length, exchangeable inlay sole is conductive and designed for the use in ESD safety footwear according to the standards DIN EN ISO 20345 and DIN EN 61340-5-1.
- The inlay sole is individually adapted to the fitting of safety footwear for women.
- The full-length, exchangeable inlay sole provides the highest possible comfort in safety shoes.
- Improvement of the shoe climate thanks to the PU foam's open cell structure. So the foot is always kept comfortably dry.
- The extreme softness of the PU foam absorbs shocks on impact and increases walking comfort.

## PENETRATION RESISTANCE

Metal-free penetration  
protection

The textile midsole complies with the penetration safety standard EN 12568 and furthermore fulfils the additional requirements for penetration protection in accordance with EN ISO 20344 / 20345. The light and flexible material enables an increased elasticity of the shoe, which can particularly be recognized when working on uneven grounds or on your knees.

The textile variant offers 100 % foot coverage compared to steel midsoles (foot coverage 85 % due to limits in the shoe manufacturing process). Being 100 % metal-free and antimagnetic, this equipment is used as penetration protection in safety shoes.

## OUTSOLE

NOVA double-density  
sole with profile



- Excellent slip resistance
- Antistatic

Outsole: PU (polyurethane)

- Colour: black
- Profile depth: 3.0 mm
- Abrasion-resistant
- Heat-resistant to approx. 130°C
- Flexible at cold temperatures to approx. -20°C
- Oil and fuel resistant

Midsole: PU (polyurethane)

- The soft PU core provides a good impact absorption and high wearing comfort