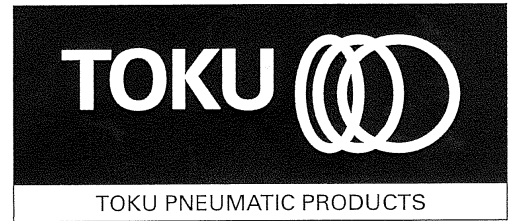


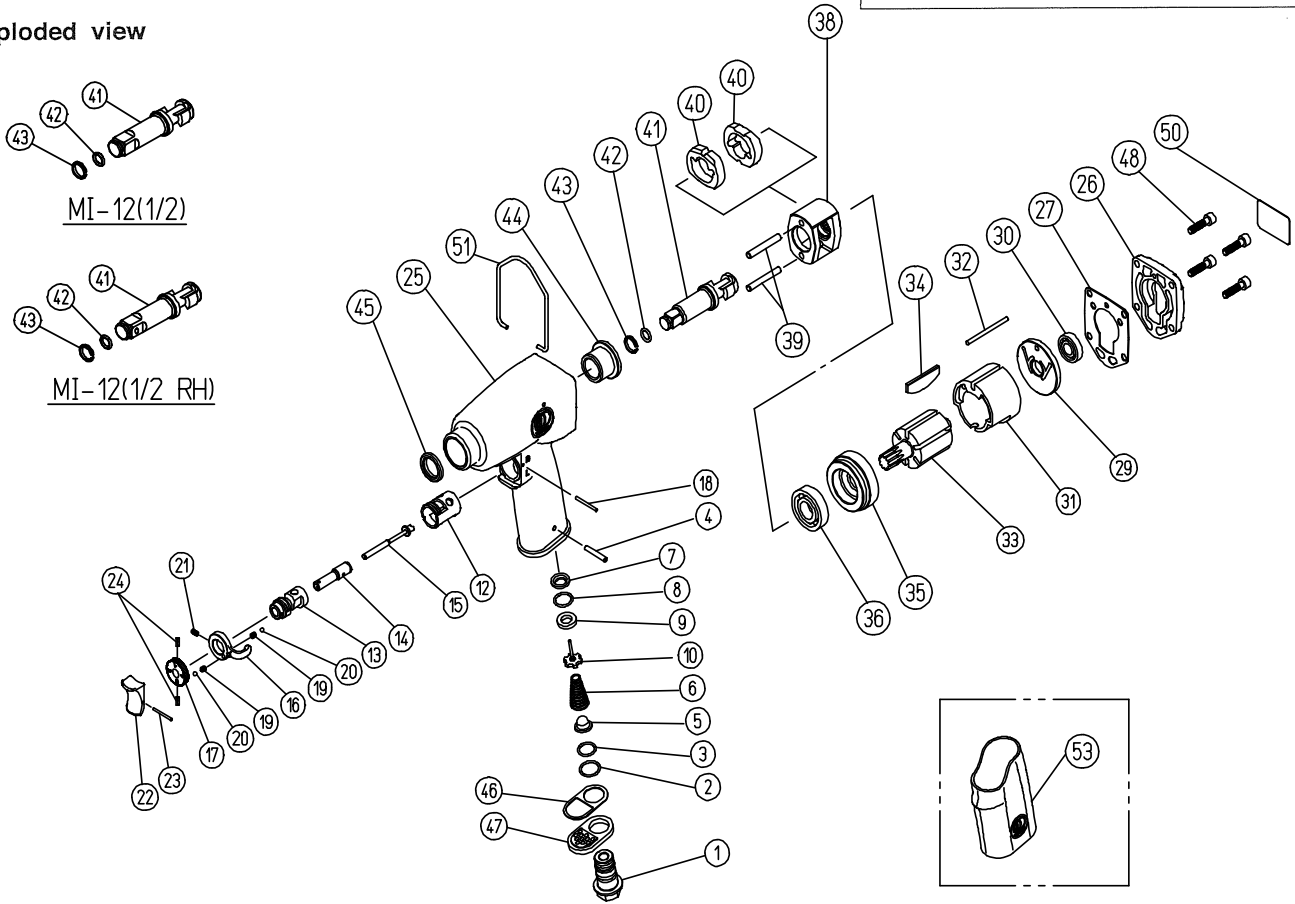
# MAINTENANCE INSTRUCTIONS

## IMPACT WRENCH

### MODEL MI-12



Exploded view



## PARTS LIST MI-12 (3/8)

Symbol No.	Parts No.	Description	Q'ty Req'd
001	43-18-90-060	Air Inlet (PT)	1
002	13-11-03-012	O Ring S-14	1
003	13-11-03-010	O Ring S-12	1
004	13-06-03-122	Spring Pin 3.5×22	1
005	13-68-03-049	Air Screen	1
006	13-08-03-204	Throttle Valve Spring	1
007	43-17-02-D80	Throttle Valve Spacer	1
008	13-11-03-011	O Ring S-12.5	1
009	13-68-04-009	Throttle Valve Seat	1
010	13-68-05-003	Throttle Valve	1
012	43-18-90-200	Reverse Valve Busing	1
013	43-18-90-210	Reverse Valve	1
014	43-18-90-150	Control Valve	1
015	43-18-90-100	Throttle Push Pin	1
016	43-15-11-230	Reverse Valve Lever	1
017	43-18-90-260	Control Valve Knob	1
018	46-97-11-230	Pin 2×23	1
019	13-08-09-005	Spring	2
020	13-05-02-008	Steel Ball 1/8	2
021	13-22-03-006	Hex. Socket Seat Screws M3×6	1
022	13-67-03-060	Trigger	1
023	13-06-01-134	Spring Pin 1.6×14	1
024	13-06-02-206	Corrugated Spring Pin 2×6	2
025	43-18-90-010	Motor Housing	1
026	43-18-90-350	Housing Cover	1
027	13-62-02-047	Housing Cover Packing	1
029	43-13-80-370	Rear End Plate	1
030	13-01-20-003	Bearing EE-3	1
031	43-13-80-360	Liner	1
032	13-04-03-121	Liner Dowel Pin	1
033	43-18-90-390	Rotor	1
034	13-71-07-007	Vane	6

Symbol No.	Parts No.	Description	Q'ty Req'd
035	43-13-80-380	Front End Plate	1
036	13-01-04-002	Bearing 6001	1
038	43-18-90-440	Hammer Frame	1
039	43-18-90-460	Hammer Pin	2
040	43-13-54-450	Hammer	2
041	43-13-54-501	Anvil Shank (3/8)	1
042	13-08-05-038	Retainer Rubber Ring	1
043	13-08-05-039	Socket Retainer	1
044	43-18-90-490	Shank Bushing	1
045	13-12-02-013	Oil Seal VB-15.875×22.92×3.1	1
046	13-62-02-048	Exhaust Deflector Gasket	1
047	13-74-03-023	Exhaust Deflector	1
048	13-17-05-020	Hex. Socket Head Cap Screw M5×20	4
050	13-73-05-092	Name Plate	1
051	43-18-90-970	Hanger	1
	43-18-90-01C	Motor Housing CP (Incl.Symbol No.25,44&45)	(1CP)
	43-13-54-50G	Anvil Shank(3/8)CP (Symbol.No.41,42&43)	(1CP)
<b>MI-12(1/2)</b>			
041	43-13-55-500	Anvil Shank (1/2)	1
042	13-11-05-006	O Ring 6227-6	1
043	13-08-05-006	Socket Retainer	1
	43-13-55-50C	Anvil Shank(1/2)CP (Symbol.No.41,42&43)	(1CP)
<b>MI-12(1/2 RH)</b>			
041	43-18-95-500	Anvil Shank (1/2RH)	1
042	13-11-05-006	O Ring 6227-6	1
043	13-08-05-006	Socket Retainer	1
	43-18-95-50C	Anvil Shank(1/2RH)CP (Symbol.No.41,42&43)	(1CP)
<b>MI-12G MI-12G(1/2RH) (with Grip Rubber)</b>			
053	13-66-07-061	Grip Rubber	1
001	43-18-90-070	Air Inlet (NPT)	1