

REVISION

1	
2	
3	3891
4	
5	
6	
7	
8	
9	
10	
11	
12	
13	
14	
15	
16	
17	
18	
19	
20	

IMPORTANT
WHEN ORDERING SPARES YOU MUST STATE THE FULL PART NUMBER AND THE PRODUCT SERIAL NUMBER - FROM THE LABEL TO PROTECT YOUR WARRANTY ALWAYS USE GENUINE HI-FORCE PARTS.

ITEM NO.	PART NUMBER	DESCRIPTION	QTY.
1	TTC100BA001	BODY	1
2	TTC100AA001	PLUG	2
3	*	3/16 BALL	2
4	*	GRUB SCREW	2
5	*	PLUG	1
6	TTC100FS002	SLEEVE	2
7	TTC100FB002	BEARING	2
8	*	RETAINING RING	2
9	TTC100DS001	SQUARE DRIVE	1
10	TTA100LA001	RELEASE BUTTON ASSY	1
11	TTC100WS001	RATCHET WHEEL	1
12	TTC100CS001	DRIVE PLATE	1
13	TTC100PS001	PAWL	1
14	*	SPRING	2
15	TTC100JS001	PIVOT PIN	1
16	*	CUP PT SCREW	2
17	TTC100ES001	END PLUG	1
18	*	RETAING RING	1
19	*	BACK UP RING	1
20	*	O - RING	1
21	*	PISTON SEAL	1
22	TTA100NS001	PISTON ASSEMBLY	1
23	*	LIP SEAL	1
24	*	O - RING	1

ITEM NO.	PART NUMBER	DESCRIPTION	QTY.
25	TTC100GB001	GLAND	1
26	*	BUTTON HEAD SCREW	3
27	TTC100LS001	SHROUD	1
28	TTC100KS001	SPLINE SLEEVE	1
29	TTC100QA002	REACTION ARM	1
30	TTC100ES002	END CAP	1
31	*	SKT CSK SCREW	2
32	*	SPRING	1
33	TTC150JS002	LATCH PIN	1
34	TTC150AS001	PLUG	1
35	TTC150JS003	RELEASE	1
36	*	O- RING	2
37	TTC100SA001	MALE SWIVEL CONNECTOR	1
38	*	SOCKET CAP HD SCREW	4
39	TTC045SA002	FEMALE SWIVEL CONNECTOR	1
40	*	O- RING	3
41	TTC045SA003	SWIVEL CONNECTOR CAP	1
42	*	SKT CSK SCREW	1
43	VRA280GB001	SPRING SEAT	1
44	*	SPRING	1
45	HF7	1/4" NPT MALE ADAPTOR	2
46	CF4F	COUPLER	1
47	CM4F	COUPLER	1

REVISION	
1	
2	
3	3891
4	
5	
6	
7	
8	
9	
10	
11	
12	
13	
14	
15	
16	
17	
18	
19	
20	

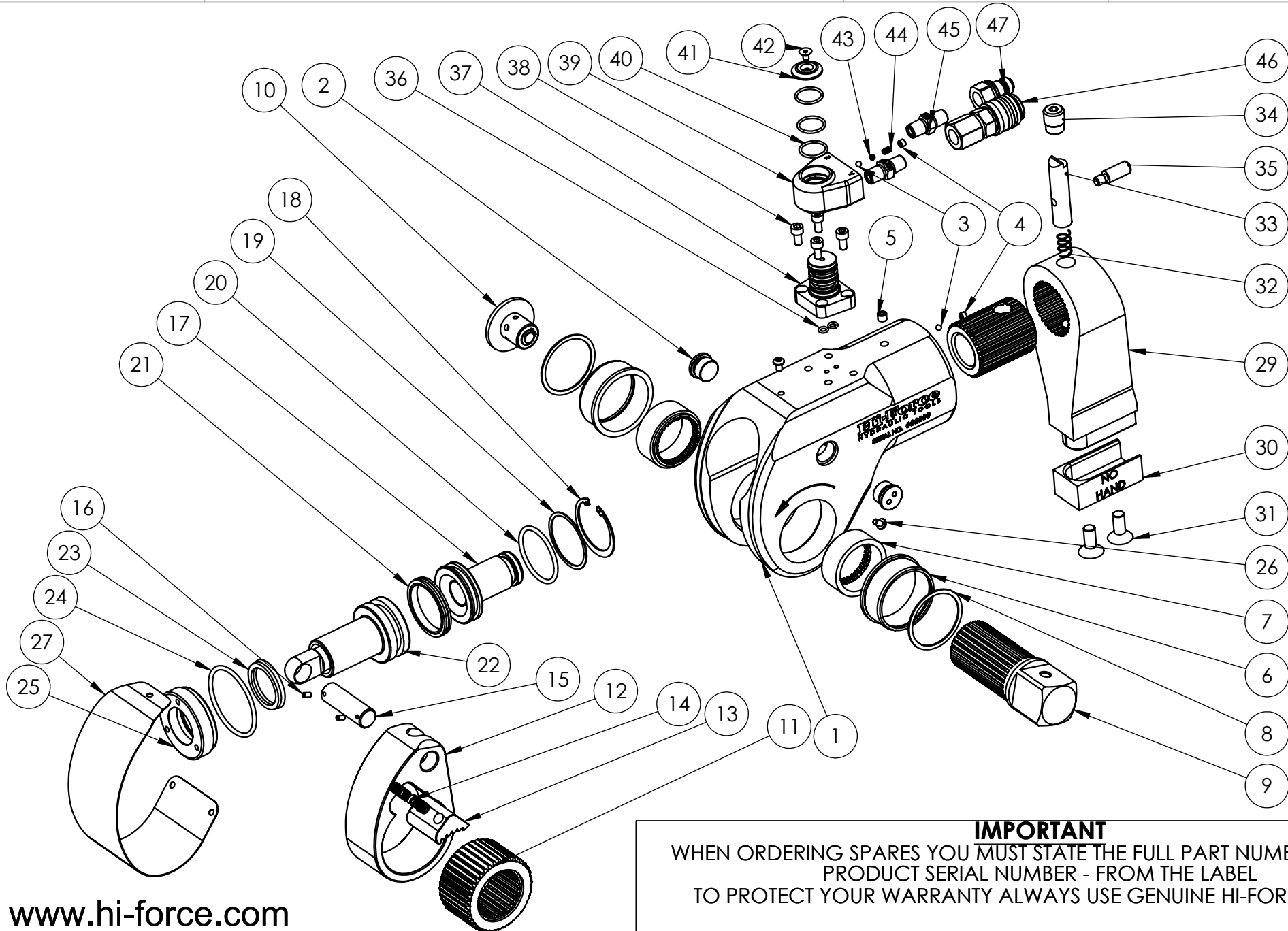
ITEMS MARKED * ARE AVAILABLE
IN TWS100NTP2-K SERVICE KIT ONLY

NOTE: ITEMS 36 AND 40 ARE ALSO AVAILABLE
IN TWSHTP2-K SWIVEL KIT.

GLAND WRENCH (FOR ITEM 25) ATC100PT001
REACTION ARM ASSEMBLY - COMPLETE TTA100QA001
SWIVEL ASSEMBLY - COMPLETE TTA100SA001

IMPORTANT

WHEN ORDERING SPARES YOU MUST STATE THE FULL PART NUMBER AND THE
PRODUCT SERIAL NUMBER - FROM THE LABEL
TO PROTECT YOUR WARRANTY ALWAYS USE GENUINE HI-FORCE PARTS.



REVISION

1	
2	3891
3	
4	
5	
6	
7	
8	
9	
10	
11	
12	
13	
14	
15	
16	
17	
18	
19	
20	

IMPORTANT
WHEN ORDERING SPARES YOU MUST STATE THE FULL PART NUMBER AND THE PRODUCT SERIAL NUMBER - FROM THE LABEL TO PROTECT YOUR WARRANTY ALWAYS USE GENUINE HI-FORCE PARTS.

ITEM NO.	PART NUMBER	DESCRIPTION	QTY.
1	TTC100BA001	BODY	1
2	TTC100AA001	PLUG	2
3	*	3/16 BALL	2
4	*	GRUB SCREW	2
5	*	PLUG	1
6	TTC100FS001	SLEEVE	2
7	TTC100FB002	BEARING	2
8	*	RETAINING RING	2
9	TTC100DS001	SQUARE DRIVE	1
10	TTA100LA001	RELEASE BUTTON ASSY	1
11	TTC100WS001	RATCHET WHEEL	1
12	TTC100CS001	DRIVE PLATE	1
13	TTC100PS001	PAWL	1
14	*	SPRING	2
15	TTC100JS001	PIVOT PIN	1
16	*	CUP PT SCREW	2
17	TTC100ES001	END PLUG	1
18	*	RETAING RING	1
19	*	BACK UP RING	1
20	*	O - RING	1
21	*	PISTON SEAL	1
22	TTA100NS001	PISTON ASSEMBLY	1
23	*	LIP SEAL	1
24	*	O - RING	1

ITEM NO.	PART NUMBER	DESCRIPTION	QTY.
25	TTC100GB001	GLAND	1
26	*	BUTTON HEAD SCREW	3
27	TTC100LS001	SHROUD	1
28	TTC100KS001	SPLINE SLEEVE	1
29	TTC100QA002	REACTION ARM	1
30	TTC100ES002	END CAP	1
31	*	SKT CSK SCREW	2
32	*	SPRING	1
33	TTC150JS002	LATCH PIN	1
34	TTC150AS001	PLUG	1
35	TTC150JS003	RELEASE	1
36	*	O- RING	2
37	TTC100SA001	MALE SWIVEL CONNECTOR	1
38	*	SOCKET CAP HD SCREW	4
39	TTC045SA002	FEMALE SWIVEL CONNECTOR	1
40	*	O- RING	3
41	TTC045SA003	SWIVEL CONNECTOR CAP	1
42	*	SKT CSK SCREW	1
43	VRA280GB001	SPRING SEAT	1
44	*	SPRING	1
45	HF7	1/4" NPT MALE ADAPTOR	2
46	CF4F	COUPLER	1
47	CM4F	COUPLER	1

REVISION	
1	
2	3891
3	
4	
5	
6	
7	
8	
9	
10	
11	
12	
13	
14	
15	
16	
17	
18	
19	
20	

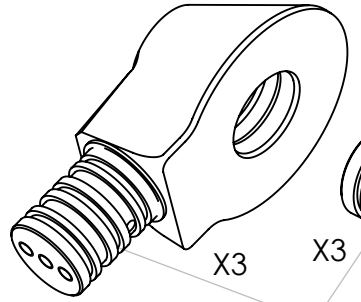
ITEMS MARKED * ARE AVAILABLE
IN TWS100NTP2-K SERVICE KIT ONLY

NOTE: ITEMS 36 AND 40 ARE ALSO AVAILABLE
IN TWSHTP2-K SWIVEL KIT.

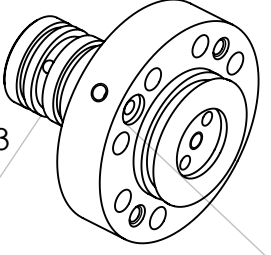
GLAND WRENCH (FOR ITEM 25) ATC100PT001
REACTION ARM ASSEMBLY - COMPLETE TTA100QA001
SWIVEL ASSEMBLY - COMPLETE TTA100SA001

IMPORTANT
WHEN ORDERING SPARES YOU MUST STATE THE FULL PART NUMBER AND THE
PRODUCT SERIAL NUMBER - FROM THE LABEL
TO PROTECT YOUR WARRANTY ALWAYS USE GENUINE HI-FORCE PARTS.

DO NOT SCALE

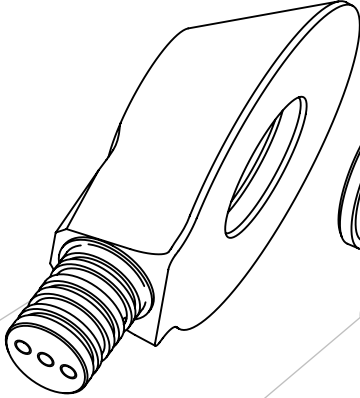


X3



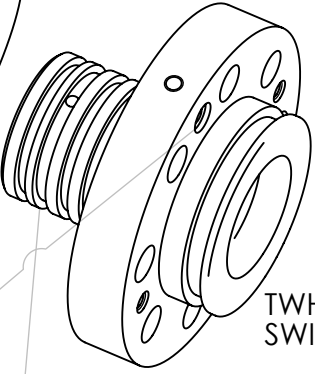
X3

X1



X3

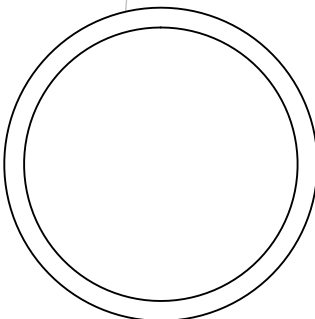
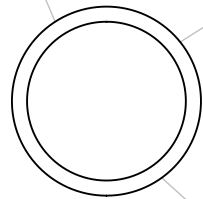
X1



X3

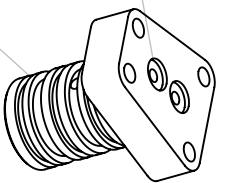
TWH210N
SWIVEL ASSEMBLY

TWH27N
TWH54N
TWH120N
SWIVEL ASSEMBLY



X3

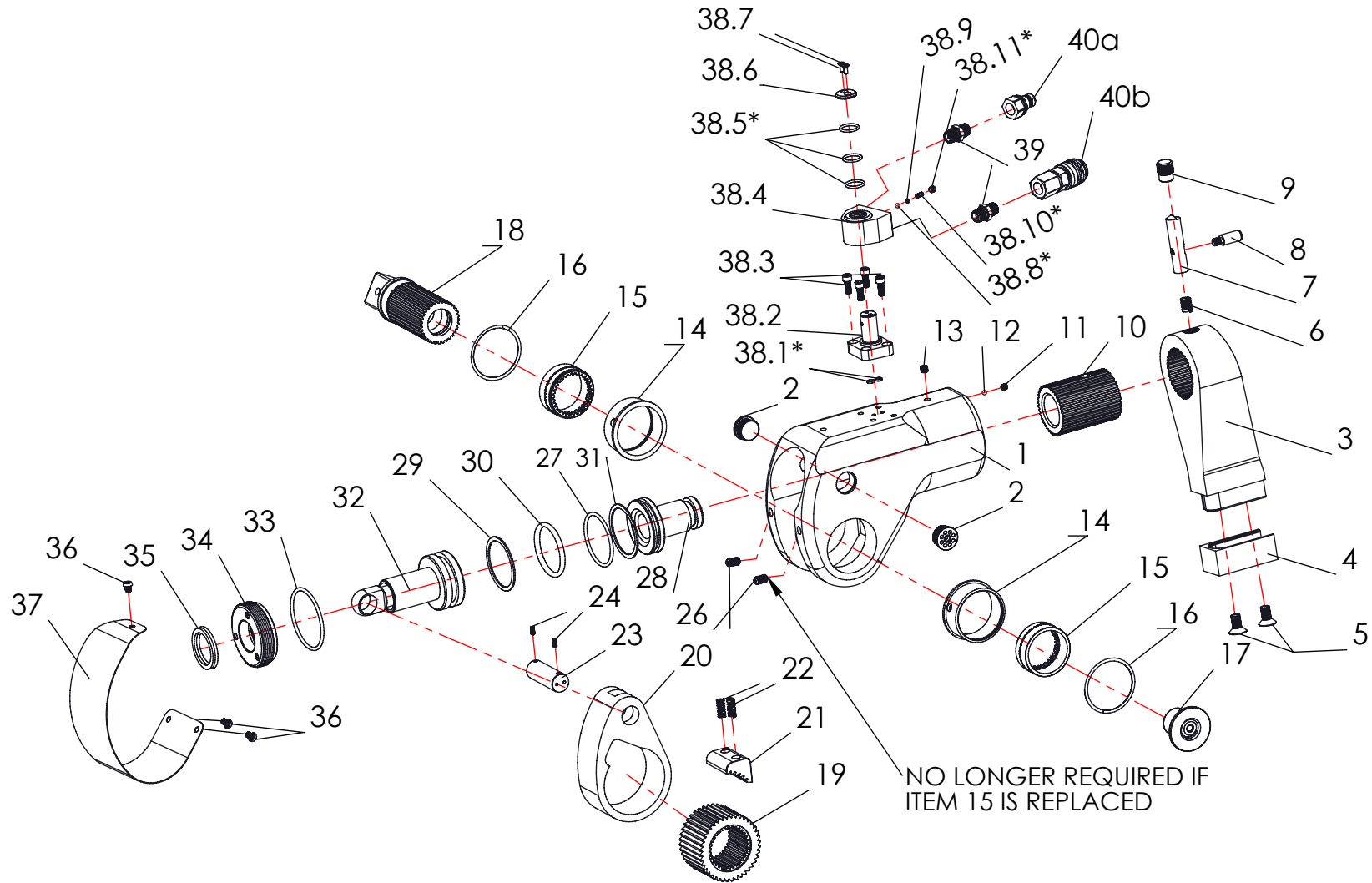
X2



TWS17N
TWS45N
TWS100N
TWS150N
TWS370N
TWH430N
SWIVEL POST

TWSHTP2-K SWIVEL SEAL KIT
(ALL SERIAL NUMBERS EXCEPT THOSE STARTING WITH "D")

PRINT OUT AT FULL SIZE AND
USE AS TEMPLATE TO AID
O-RING IDENTIFICATION



REVISION

1	3891
2	
3	
4	
5	
6	
7	
8	
9	
10	
11	
12	
13	
14	
15	
16	
17	
18	
19	
20	

IMPORTANT

WHEN ORDERING SPARES YOU MUST STATE THE FULL PART NUMBER AND THE PRODUCT SERIAL NUMBER - FROM THE LABEL TO PROTECT YOUR WARRANTY ALWAYS USE GENUINE HI-FORCE PARTS.

REF	Part	PART NUMBER	REF	Part	PART NUMBER
1	Housing	TTC100BA001	22	Drive Segment Spring	*
2	Housing Threaded Plug	TTC100AA001	23	Drive Pin	TTC100JS001
3	Reaction Arm	TTC100QA002	24	Drive Pin Screw	FAS004ME008
4	Reaction Arm Cover	TTC100ES002	26	Ball Plunger	*
5	Cover Screws	*	27	O-ring	*
6	Reaction Arm Spring	*	28	End Plug	TTC100ES001
7	Locking Pin	TTC150JS002	29	Piston Seal	*
8	Retract Button	TTC150JS003	30	O-ring	*
9	Reaction Arm Screw	TTC150AS001	31	Back up ring	*
10	Spline Sleeve	TTC100KS001	32	Piston Rod Assembly	TTA100NS001 (NOTE 2)
11	Housing Screw	*	33	Housing Seal	*
12	Steel Ball	*	34	Cylinder Gland	TTC100GB001
13	Casing Cap	FPC002PN001	35	Gland Seal	*
14	Drive Bushing	TTC100FS001	36	Shroud Screw	*
15	Sleeve	TTC100FB002	37	Shroud	TTC100LS001
16	Sleeve Retainer Clip	*	38	Uniswivel Assembly	TTA100SA001
17	Drive Retainer	TTA100LA001	39	Fitting	HF7
18	Square Drive	TTC100DS001	40a	Quick Coupler (Male)	CM4F
19	Ratchet	TTC100WS001	40b	Quick Coupler (Female)	CF4F
20	Drive Plate	TTC100CS001			
21	Drive Segment	TTC100PS001			

REVISION

1 3891

2

3

4

5

6

7

8

9

10

11

12

13

14

15

16

17

18

19

20

ITEMS MARKED * ARE AVAILABLE
IN TWS100NTP1-K SERVICE KIT ONLY
N.B SOME ITEMS NOT SHOWN IN TABLE
REFER TO DRAWING ALSO

NOTE 1: ITEMS 38.1, 38.5
ALSO AVAILABLE IN TWSHTP1-K

NOTE 2: IF PISTON ROD ASSEMBLY IS REPLACED
SERVICE KIT TWS100NTP2-K WILL ALSO BE REQUIRED
FOR CURRENT VERSION OF PISTON SEAL

IMPORTANT

WHEN ORDERING SPARES YOU MUST STATE THE FULL PART NUMBER AND THE
PRODUCT SERIAL NUMBER - FROM THE LABEL
TO PROTECT YOUR WARRANTY ALWAYS USE GENUINE HI-FORCE PARTS.

DO NOT SCALE

WARNING
ON TWH210N TOOLS
WITH THIS TYPE OF SWIVEL IT
IS STRONGLY RECCOMENDED THAT
THE WHOLE ASSEMBLY IS REPLACED
WITH TWH210N-SK ASSEMBLY KIT

